

WEBSITE:

www.tubeclo.com



TUBE CLAMPS

TWIN SERIES

Specification

According to DIN 3015, Part 3

Size Range

- Twin Series (6 – 42mm)

Accessories Material

- Galvanized Carbon Steel ST 37 (W3)
- Stainless Steel SS316 (W5)

Clamp Body Material and Temperature Range

- Polypropylene, PP (-30 Deg C to 90 Deg C)
- Polyamide, PA (-40 Deg C to 120 Deg C)
- Aluminium, AL (Up to 300 Deg C)



Twin Series Pipe Clamps

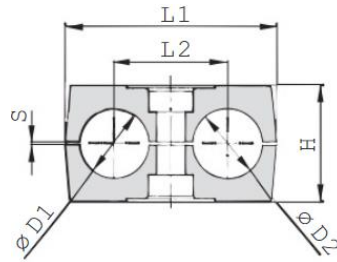
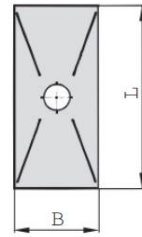
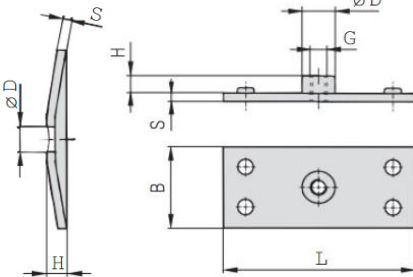
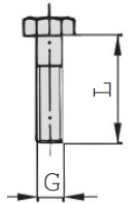
Twin Series Clamps Recommended Torque Values

Group	Polypropylene Tightening Torque (N-m)	Polypropylene Tightening Torque (ft-lb)	Polyamide Tightening Torque (N-m)	Polyamide Tightening Torque (ft-lb)
1D	5	4	5	4
2D	12	9	12	9
3D	12	9	12	9
4D	12	9	12	9
5D	8	6	8	6

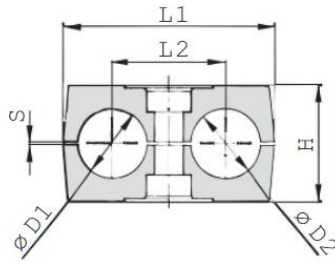
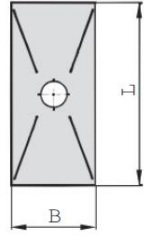
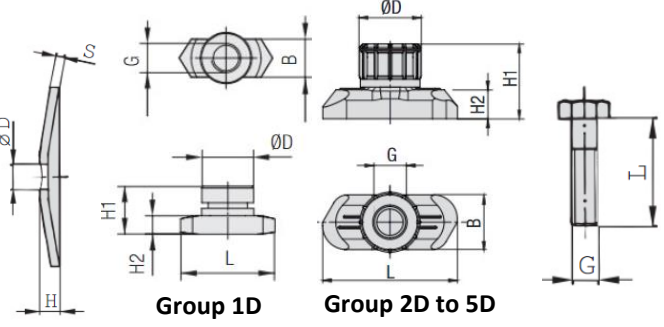
Ordering Information

PC	-	T	-	PP	-	1	-	3D	-	006	-	C
I		II		III		IV		V		VI		VII

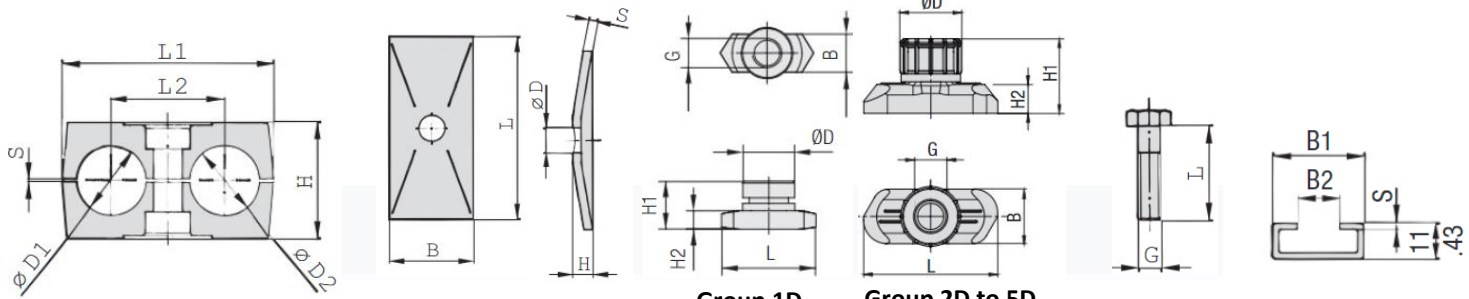
I	Type of Item	:	PC	Pipe Clamp
II	Series	:	T	Twin
III	Material of Clamp Body	:	PP PA	Polypropylene Polyamide
IV	Group	:	1 2 3 4 5 6	Complete Set Cover Plate with Rail Nut Set Cover Plate with Mounting Rail Set Locking Plate and Stacking Bolt Set Double Stack Cover Plate with Locking Plate and Stacking Bolt Double/Triple Stack with Cover Plate
V	Size Series	:	1D 2D 3D 4D 5D	Group 1D Group 2D Group 3D Group 4D Group 5D
VI	Pipe O.D.	:	MM	Metric Size
VII	Material of Metal Parts	:	C SS	Carbon Steel Stainless Steel SS316

G1 TWIN SERIES COMPLETE SET (HEX BOLT + COVER PLATE + CLAMP BODY + WELD PLATE)

Clamp Body

Cover Plate

Weld Plate

Hex Bolt

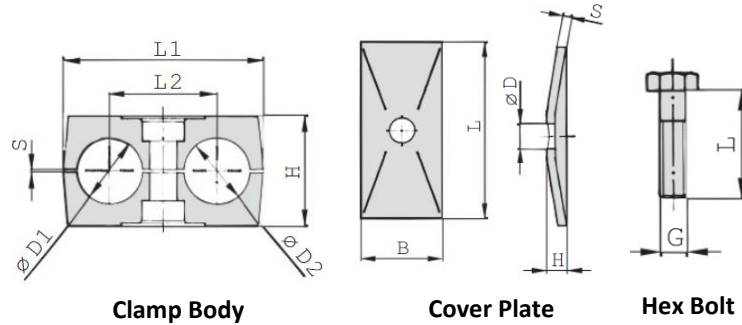
Series	Order Code	Pipe/ Hose/ Tube O.D.	Nominal Inch Bore	Pipe/ Tube/ Hose Inch O.D.	Clamp Body					Cover Plate					Weld Plate					Bolt
		D1	D1	D1	L1	L2	H	S	B	L	B	H	S	D	L	B	S	H	D	
1D	PC-T**-1-1D-006-*	6/6			36	20	26.5	0.6	30	34	30	7	3	7	37	30	3	6.5	12	M6 x 35
	PC-T**-1-1D-006.4-*	6.4/6.4		1/4																
	PC-T**-1-1D-008-*	8/8		5/16																
	PC-T**-1-1D-009.5-*	9.5/9.5		3/8																
	PC-T**-1-1D-010-*	10/10	1/8																	
	PC-T**-1-1D-012-*	12/12																		
2D	PC-T**-1-2D-012.7-*	12.7/12.7		1/2	53	29	26.5	0.7	30	52	30	7	3	9	55	30	5	6	14	M8 x 35
	PC-T**-1-2D-013.5-*	13.5/13.5	1/4																	
	PC-T**-1-2D-014-*	14/14																		
	PC-T**-1-2D-015-*	15/15		5/8																
	PC-T**-1-2D-016-*	16/16																		
	PC-T**-1-2D-017.2-*	17.2/17.2	3/8																	
	PC-T**-1-2D-018-*	18/18																		
3D	PC-T**-1-3D-019-*	19/19		3/4	67	36	36.5	0.7	30	65	30	7	3	9	70	30	5	6	14	M8 x 45
	PC-T**-1-3D-020-*	20/20																		
	PC-T**-1-3D-021.3-*	21.3/21.3	1/2																	
	PC-T**-1-3D-022-*	22/22		7/8																
	PC-T**-1-3D-025-*	25/25																		
	PC-T**-1-3D-025.4-*	25.4/25.4		1																
4D	PC-T**-1-4D-026.9-*	26.9/26.9	3/4		80	45	38	0.7	30	79	30	7	3	9	85	30	5	6	14	M8 x 50
	PC-T**-1-4D-028-*	28/28																		
	PC-T**-1-4D-030-*	30/30																		
5D	PC-T**-1-5D-032-*	32/32			106	56	52	0.7	30	102	30	7	3	9	110	30	5	6	14	M8 x 60
	PC-T**-1-5D-033.7-*	33.7/33.7																		
	PC-T**-1-5D-035-*	35/35																		
	PC-T**-1-5D-038-*	38/38																		
	PC-T**-1-5D-040-*	40/40																		
	PC-T**-1-5D-042-*	42/42																		

**G2 TWIN SERIES COVER PLATE WITH RAIL NUT SET
(HEX BOLT + COVER PLATE + CLAMP BODY + RAIL NUT)**

Clamp Body

Cover Plate

Group 1D
Group 2D to 5D
Hex Bolt

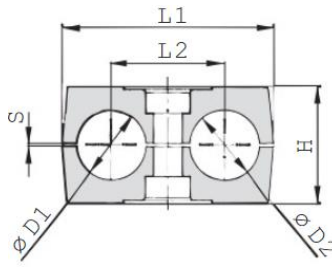
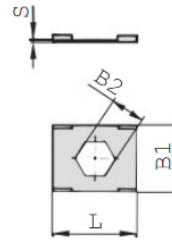
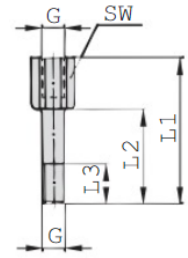
Series	Order Code	D1/D2 Pipe O.D.	Inch Bore	Inch O.D.	Clamp Body					Cover Plate				Rail Nut				Bolt	
					L1	L2	H	S	B	L	H	S	D	B	H1	H2	D		G
1D	PC-T**-2-1D-006-*	6/6			36	20	26.5	0.6	30	34	7	3	7	10.2	13.5	5.5	12	M6	M6 x 35
	PC-T**-2-1D-006.4-*	6.4/6.4		1/4															
	PC-T**-2-1D-008-*	8/8		5/16															
	PC-T**-2-1D-009.5-*	9.5/9.5		3/8															
	PC-T**-2-1D-010-*	10/10	1/8																
	PC-T**-2-1D-012-*	12/12																	
2D	PC-T**-2-2D-012.7-*	12.7/12.7		1/2	53	29	26.5	0.7	30	52	7	3	9	10.4	13	5	14	M8	M8 x 35
	PC-T**-2-2D-013.5-*	13.5/13.5		1/4															
	PC-T**-2-2D-014-*	14/14																	
	PC-T**-2-2D-015-*	15/15																	
	PC-T**-2-2D-016-*	16/16		5/8															
	PC-T**-2-2D-017.2-*	17.2/17.2	3/8																
PC-T**-2-2D-018-*	18/18																		
3D	PC-T**-2-3D-019-*	19/19		3/4	67	36	36.5	0.7	30	65	7	3	9	10.4	13	5	14	M8	M8 x 45
	PC-T**-2-3D-020-*	20/20																	
	PC-T**-2-3D-021.3-*	21.3/21.3	1/2																
	PC-T**-2-3D-022-*	22/22		7/8															
	PC-T**-2-3D-025-*	25/25																	
	PC-T**-2-3D-025.4-*	25.4/25.4		1															
4D	PC-T**-2-4D-026.9-*	26.9/26.9	3/4		80	45	38	0.7	30	79	7	3	9	10.4	13	5	14	M8	M8 x 50
	PC-T**-2-4D-028-*	28/28																	
	PC-T**-2-4D-030-*	30/30																	
5D	PC-T**-2-5D-032-*	32/32			106	56	52	0.7	30	102	7	3	9	10.4	13	5	14	M8	M8 x 60
	PC-T**-2-5D-033.7-*	33.7/33.7																	
	PC-T**-2-5D-035-*	35/35																	
	PC-T**-2-5D-038-*	38/38																	
	PC-T**-2-5D-040-*	40/40																	
	PC-T**-2-5D-042-*	42/42																	

G3 TWIN SERIES COVER PLATE WITH MOUNTING RAIL AND RAIL NUT SET (HEX BOLT + COVER PLATE + CLAMP BODY + MOUNTING RAIL + RAIL NUT)

Clamp Body
Cover Plate
Rail Nut
Hex Bolt
Mounting Rail

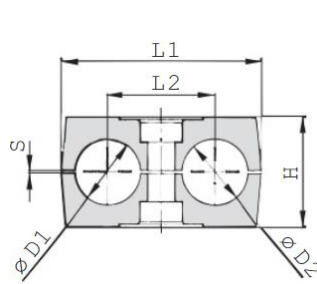
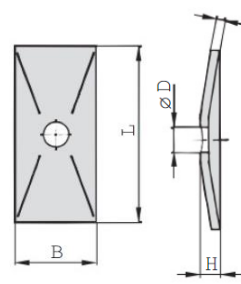
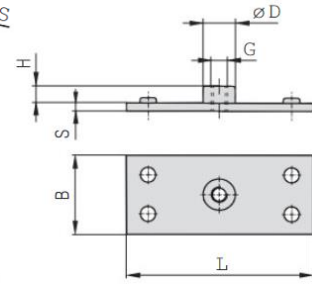
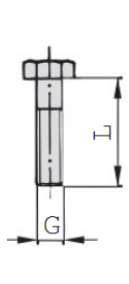
Series	Order Code	D1/D2 Pipe O.D.	Inch Bore	Inch O.D.	Clamp Body					Cover Plate				Rail Nut					Bolt	Mounting Rail		
					L1	L2	H	S	B	L	H	S	D	B	H1	H2	D	G		B1	B2	S
1D	PC-T**-3-1D-006-*	6/6			36	20	26.5	0.6	30	34	7	3	7	10.2	13.5	5.5	12	M6	M6 x 35	28	11	2
	PC-T**-3-1D-006.4-*	6.4/6.4	1/4																			
	PC-T**-3-1D-008-*	8/8	5/16																			
	PC-T**-3-1D-009.5-*	9.5/9.5	3/8																			
	PC-T**-3-1D-010-*	10/10	1/8																			
PC-T**-3-1D-012-*	12/12																					
2D	PC-T**-3-2D-012.7-*	12.7/12.7		1/2	53	29	26.5	0.7	30	52	7	3	9	10.4	13	5	14	M8	M8 x 35	28	11	2
	PC-T**-3-2D-013.5-*	13.5/13.5	1/4																			
	PC-T**-3-2D-014-*	14/14																				
	PC-T**-3-2D-015-*	15/15																				
	PC-T**-3-2D-016-*	16/16	5/8																			
	PC-T**-3-2D-017.2-*	17.2/17.2	3/8																			
PC-T**-3-2D-018-*	18/18																					
3D	PC-T**-3-3D-019-*	19/19		3/4	67	36	36.5	0.7	30	65	7	3	9	10.4	13	5	14	M8	M8 x 45	28	11	2
	PC-T**-3-3D-020-*	20/20																				
	PC-T**-3-3D-021.3-*	21.3/21.3	1/2																			
	PC-T**-3-3D-022-*	22/22	7/8																			
	PC-T**-3-3D-025-*	25/25																				
PC-T**-3-3D-025.4-*	25.4/25.4	1																				
4D	PC-T**-3-4D-026.9-*	26.9/26.9	3/4		80	45	38	0.7	30	79	7	3	9	10.4	13	5	14	M8	M8 x 50	28	11	2
	PC-T**-3-4D-028-*	28/28																				
	PC-T**-3-4D-030-*	30/30																				
5D	PC-T**-3-5D-032-*	32/32			106	56	52	0.7	30	102	7	3	9	10.4	13	5	14	M8	M8 x 60	28	11	2
	PC-T**-3-5D-033.7-*	33.7/33.7																				
	PC-T**-3-5D-035-*	35/35																				
	PC-T**-3-5D-038-*	38/38																				
	PC-T**-3-5D-040-*	40/40																				
PC-T**-3-5D-042-*	42/42																					

**G4 STANDARD SERIES LONG HEX BOLT AND NUT SET
(CLAMP BODY + COVER PLATE + LONG HEX BOLT AND NUT)**

Clamp Body
Cover Plate
Hex Bolt

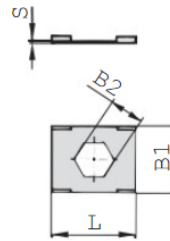
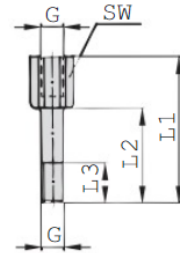
Series	Order Code	D1/D2 Pipe O.D.	Inch Bore	Inch O.D.	Clamp Body					Cover Plate				Long Hex Bolt	Nuts
					L1	L2	H	S	B	L	H	S	D		
1D	PC-T.**-3-1D-006-*	6/6			36	20	26.5	0.6	30	34	7	3	7	M6 x 60	M6
	PC-T.**-3-1D-006.4-*	6.4/6.4		1/4											
	PC-T.**-3-1D-008-*	8/8		5/16											
	PC-T.**-3-1D-009.5-*	9.5/9.5		3/8											
	PC-T.**-3-1D-010-*	10/10	1/8												
PC-T.**-3-1D-012-*	12/12														
2D	PC-T.**-3-2D-012.7-*	12.7/12.7		1/2	53	29	26.5	0.7	30	52	7	3	9	M8 x 60	M8
	PC-T.**-3-2D-013.5-*	13.5/13.5	1/4												
	PC-T.**-3-2D-014-*	14/14													
	PC-T.**-3-2D-015-*	15/15													
	PC-T.**-3-2D-016-*	16/16	5/8												
	PC-T.**-3-2D-017.2-*	17.2/17.2	3/8												
PC-T.**-3-2D-018-*	18/18														
3D	PC-T.**-3-3D-019-*	19/19		3/4	67	36	36.5	0.7	30	65	7	3	9	-	M8
	PC-T.**-3-3D-020-*	20/20													
	PC-T.**-3-3D-021.3-*	21.3/21.3	1/2												
	PC-T.**-3-3D-022-*	22/22	7/8												
	PC-T.**-3-3D-025-*	25/25													
PC-T.**-3-3D-025.4-*	25.4/25.4		1												
4D	PC-T.**-3-4D-026.9-*	26.9/26.9	3/4		80	45	38	0.7	30	79	7	3	9	-	M8
	PC-T.**-3-4D-028-*	28/28													
	PC-T.**-3-4D-030-*	30/30													
5D	PC-T.**-3-5D-032-*	32/32			106	56	52	0.7	30	102	7	3	9	-	M8
	PC-T.**-3-5D-033.7-*	33.7/33.7													
	PC-T.**-3-5D-035-*	35/35													
	PC-T.**-3-5D-038-*	38/38													
	PC-T.**-3-5D-040-*	40/40													
PC-T.**-3-5D-042-*	42/42														

G5 TWIN SERIES DOUBLE STACK SET (STACKING BOLT + SAFETY LOCKING PLATE + CLAMP BODY)

Clamps Body

Safety Locking Plate

Stacking Bolt

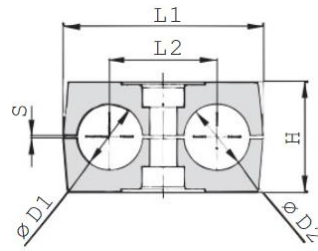
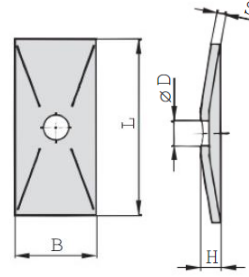
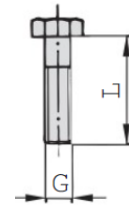
Series	Order Code	D1/D2 Pipe O.D.	Inch Bore	Inch O.D.	Clamp Body					Safety Locking Plate				Stacking Bolt				
					L1	L2	H	S	B	L	B	B1	S	G	L1	L2	L3	SW
1D	PC-T**-4-1D-006.*	6/6			36	20	26.5	0.6	30	27	22	11.2	0.5	M6	34	20	12	11
	PC-T**-4-1D-006.4.*	6.4/6.4		1/4														
	PC-T**-4-1D-008.*	8/8		5/16														
	PC-T**-4-1D-009.5.*	9.5/9.5		3/8														
	PC-T**-4-1D-010.*	10/10	1/8															
PC-T**-4-1D-012.*	12/12																	
2D	PC-T**-4-2D-012.7.*	12.7/12.7		1/2	53	29	26.5	0.7	30	27	22	12.2	0.5	M8	33	20	12	12
	PC-T**-4-2D-013.5.*	13.5/13.5	1/4															
	PC-T**-4-2D-014.*	14/14																
	PC-T**-4-2D-015.*	15/15																
	PC-T**-4-2D-016.*	16/16		5/8														
	PC-T**-4-2D-017.2.*	17.2/17.2	3/8															
PC-T**-4-2D-018.*	18/18																	
3D	PC-T**-4-3D-019.*	19/19		3/4	67	36	36.5	0.7	30	27	22	12.2	0.5	M8	44	29	12	12
	PC-T**-4-3D-020.*	20/20																
	PC-T**-4-3D-021.3.*	21.3/21.3	1/2															
	PC-T**-4-3D-022.*	22/22		7/8														
	PC-T**-4-3D-025.*	25/25																
PC-T**-4-3D-025.4.*	25.4/25.4		1															
4D	PC-T**-4-4D-026.9.*	26.9/26.9	3/4		80	45	38	0.7	30	27	22	12.2	0.5	M8	49	34	12	12
	PC-T**-4-4D-028.*	28/28																
	PC-T**-4-4D-030.*	30/30																
5D	PC-T**-4-5D-032.*	32/32			106	56	52	0.7	30	27	22	12.2	0.5	M8	61	46	12	12
	PC-T**-4-5D-033.7.*	33.7/33.7																
	PC-T**-4-5D-035.*	35/35																
	PC-T**-4-5D-038.*	38/38																
	PC-T**-4-5D-040.*	40/40																
	PC-T**-4-5D-042.*	42/42																

G6 TWIN SERIES DOUBLE/TRIPLE STACK SET (HEX BOLT + COVER PLATE + STACKING BOLT + SAFETY LOCKING PLATE + CLAMP BODY + WELD PLATE)

Clamp Body

Cover Plate

Weld Plate

Hex Bolt

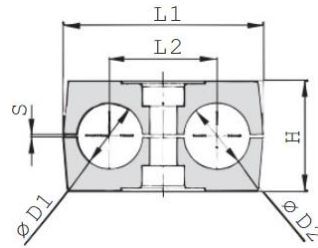
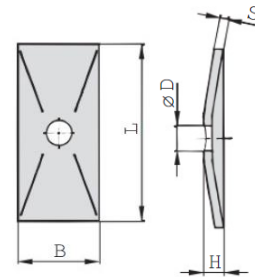
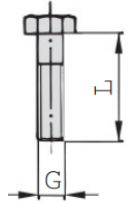
Series	Order Code	D1/D2 Pipe O.D.	Inch Bore	Inch O.D.	Clamp Body					Cover Plate					Weld Plate					Bolt	
					L1	L2	H	S	B	L	B	H	S	D	L	B	S	H	D		G
1D	PC-T**-5-1D-006-*	6/6			36	20	26.5	0.6	30	34	30	7	3	7	37	30	3	6.5	12	M6	M6 x 35
	PC-T**-5-1D-006.4-*	6.4/6.4	1/4																		
	PC-T**-5-1D-008-*	8/8	5/16																		
	PC-T**-5-1D-009.5-*	9.5/9.5	3/8																		
	PC-T**-5-1D-010-*	10/10	1/8																		
	PC-T**-5-1D-012-*	12/12																			
2D	PC-T**-5-2D-012.7-*	12.7/12.7	1/2		53	29	26.5	0.7	30	52	30	7	3	9	55	30	5	6	14	M8	M8 x 35
	PC-T**-5-2D-013.5-*	13.5/13.5	1/4																		
	PC-T**-5-2D-014-*	14/14																			
	PC-T**-5-2D-015-*	15/15																			
	PC-T**-5-2D-016-*	16/16	5/8																		
	PC-T**-5-2D-017.2-*	17.2/17.2	3/8																		
	PC-T**-5-2D-018-*	18/18																			
3D	PC-T**-5-3D-019-*	19/19	3/4		67	36	36.5	0.7	30	65	30	7	3	9	70	30	5	6	14	M8	M8 x 45
	PC-T**-5-3D-020-*	20/20																			
	PC-T**-5-3D-021.3-*	21.3/21.3	1/2																		
	PC-T**-5-3D-022-*	22/22	7/8																		
	PC-T**-5-3D-025-*	25/25																			
	PC-T**-5-3D-025.4-*	25.4/25.4	1																		
4D	PC-T**-5-4D-026.9-*	26.9/26.9	3/4		80	45	38	0.7	30	79	30	7	3	9	85	30	5	6	14	M8	M8 x 50
	PC-T**-5-4D-028-*	28/28																			
	PC-T**-5-4D-030-*	30/30																			
5D	PC-T**-5-5D-032-*	32/32			106	56	52	0.7	30	102	30	7	3	9	110	30	5	6	14	M8	M8 x 60
	PC-T**-5-5D-033.7-*	33.7/33.7																			
	PC-T**-5-5D-035-*	35/35																			
	PC-T**-5-5D-038-*	38/38																			
	PC-T**-5-5D-040-*	40/40																			
	PC-T**-5-5D-042-*	42/42																			

G6 TWIN SERIES DOUBLE/TRIPLE STACK SET (HEX BOLT + COVER PLATE + STACKING BOLT + SAFETY LOCKING PLATE + CLAMP BODY + WELD PLATE)

Safety Locking Plate

Stacking Bolt

Series	Order Code	D1/D2 Pipe O.D.	Inch Bore	Inch O.D.	Safety Locking Plate				Stacking Bolt				
					L	B	B1	S	G	L1	L2	L3	SW
1D	PC-T**-5-1D-006-*	6/6			27	22	11.2	0.5	M6	34	20	12	11
	PC-T**-5-1D-006.4-*	6.4/6.4		1/4									
	PC-T**-5-1D-008-*	8/8		5/16									
	PC-T**-5-1D-009.5-*	9.5/9.5		3/8									
	PC-T**-5-1D-010-*	10/10	1/8										
	PC-T**-5-1D-012-*	12/12											
2D	PC-T**-5-2D-012.7-*	12.7/12.7		1/2	27	22	12.2	0.5	M8	33	20	12	12
	PC-T**-5-2D-013.5-*	13.5/13.5	1/4										
	PC-T**-5-2D-014-*	14/14											
	PC-T**-5-2D-015-*	15/15											
	PC-T**-5-2D-016-*	16/16		5/8									
	PC-T**-5-2D-017.2-*	17.2/17.2	3/8										
PC-T**-5-2D-018-*	18/18												
3D	PC-T**-5-3D-019-*	19/19		3/4	27	22	12.2	0.5	M8	44	29	12	12
	PC-T**-5-3D-020-*	20/20											
	PC-T**-5-3D-021.3-*	21.3/21.3	1/2										
	PC-T**-5-3D-022-*	22/22		7/8									
	PC-T**-5-3D-025-*	25/25											
	PC-T**-5-3D-025.4-*	25.4/25.4		1									
4D	PC-T**-5-4D-026.9-*	26.9/26.9		3/4	27	22	12.2	0.5	M8	49	34	12	12
	PC-T**-5-4D-028-*	28/28											
	PC-T**-5-4D-030-*	30/30											
5D	PC-T**-5-5D-032-*	32/32			27	22	12.2	0.5	M8	61	46	12	12
	PC-T**-5-5D-033.7-*	33.7/33.7											
	PC-T**-5-5D-035-*	35/35											
	PC-T**-5-5D-038-*	38/38											
	PC-T**-5-5D-040-*	40/40											
	PC-T**-5-5D-042-*	42/42											

**G7 STANDARD SERIES LONG HEX BOLT AND NUT SET
(CLAMP BODY + COVER PLATE + LONG HEX BOLT AND NUT)**

Clamp Body

Cover Plate

Hex Bolt

Series	Order Code	D1/D2 Pipe O.D.	Inch Bore	Inch O.D.	Clamp Body					Cover Plate				Long Hex Bolt	Nuts
					L1	L2	H	S	B	L	H	S	D		
1D	PC-T**-3-1D-006-*	6/6			36	20	26.5	0.6	30	34	7	3	7	M6 x 60	M6
	PC-T**-3-1D-006.4-*	6.4/6.4		1/4											
	PC-T**-3-1D-008-*	8/8		5/16											
	PC-T**-3-1D-009.5-*	9.5/9.5		3/8											
	PC-T**-3-1D-010-*	10/10	1/8												
PC-T**-3-1D-012-*	12/12														
2D	PC-T**-3-2D-012.7-*	12.7/12.7		1/2	53	29	26.5	0.7	30	52	7	3	9	M8 x 60	M8
	PC-T**-3-2D-013.5-*	13.5/13.5	1/4												
	PC-T**-3-2D-014-*	14/14													
	PC-T**-3-2D-015-*	15/15													
	PC-T**-3-2D-016-*	16/16	5/8												
	PC-T**-3-2D-017.2-*	17.2/17.2	3/8												
PC-T**-3-2D-018-*	18/18														
3D	PC-T**-3-3D-019-*	19/19		3/4	67	36	36.5	0.7	30	65	7	3	9	-	M8
	PC-T**-3-3D-020-*	20/20													
	PC-T**-3-3D-021.3-*	21.3/21.3	1/2												
	PC-T**-3-3D-022-*	22/22	7/8												
	PC-T**-3-3D-025-*	25/25													
PC-T**-3-3D-025.4-*	25.4/25.4	1													
4D	PC-T**-3-4D-026.9-*	26.9/26.9	3/4		80	45	38	0.7	30	79	7	3	9	-	M8
	PC-T**-3-4D-028-*	28/28													
	PC-T**-3-4D-030-*	30/30													
5D	PC-T**-3-5D-032-*	32/32			106	56	52	0.7	30	102	7	3	9	-	M8
	PC-T**-3-5D-033.7-*	33.7/33.7													
	PC-T**-3-5D-035-*	35/35													
	PC-T**-3-5D-038-*	38/38													
	PC-T**-3-5D-040-*	40/40													
PC-T**-3-5D-042-*	42/42														

G8 TWIN SERIES COVER PLATE ONLY SET (HEX BOLT + COVER PLATE + CLAMP BODY)

Clamp Body

Cover Plate

Hex Bolt

Series	Order Code	D1/D2 Pipe O.D.	Inch Bore	Inch O.D.	Clamp Body					Cover Plate				Bolt
					L1	L2	H	S	B	L	H	S	D	
1D	PC-T**-6-1D-006.*	6/6			36	20	26.5	0.6	30	34	7	3	7	M6 x 35
	PC-T**-6-1D-006.4.*	6.4/6.4		1/4										
	PC-T**-6-1D-008.*	8/8		5/16										
	PC-T**-6-1D-009.5.*	9.5/9.5		3/8										
	PC-T**-6-1D-010.*	10/10	1/8											
	PC-T**-6-1D-012.*	12/12												
2D	PC-T**-6-2D-012.7.*	12.7/12.7		1/2	53	29	26.5	0.7	30	52	7	3	9	M8 x 35
	PC-T**-6-2D-013.5.*	13.5/13.5	1/4											
	PC-T**-6-2D-014.*	14/14												
	PC-T**-6-2D-015.*	15/15												
	PC-T**-6-2D-016.*	16/16	5/8											
	PC-T**-6-2D-017.2.*	17.2/17.2	3/8											
PC-T**-6-2D-018.*	18/18													
3D	PC-T**-6-3D-019.*	19/19		3/4	67	36	36.5	0.7	30	65	7	3	9	M8 x 45
	PC-T**-6-3D-020.*	20/20												
	PC-T**-6-3D-021.3.*	21.3/21.3	1/2											
	PC-T**-6-3D-022.*	22/22	7/8											
	PC-T**-6-3D-025.*	25/25												
	PC-T**-6-3D-025.4.*	25.4/25.4	1											
4D	PC-T**-6-4D-026.9.*	26.9/26.9	3/4		80	45	38	0.7	30	79	7	3	9	M8 x 50
	PC-T**-6-4D-028.*	28/28												
	PC-T**-6-4D-030.*	30/30												
5D	PC-T**-6-5D-032.*	32/32			106	56	52	0.7	30	102	7	3	9	M8 x 60
	PC-T**-6-5D-033.7.*	33.7/33.7												
	PC-T**-6-5D-035.*	35/35												
	PC-T**-6-5D-038.*	38/38												
	PC-T**-6-5D-040.*	40/40												
	PC-T**-6-5D-042.*	42/42												



TUBE CLAMPS TWIN SERIES

TUBECLO

Conditions of Use of Catalogue:

The information in the catalogue are not binding and in order to improve distribution, Tubeclo reserves the right to make any change including size and pressure ratings considered necessary at any time and without prior notice.

According to the copyright and the civil law, any reproduction (also partial) of figures and texts of this catalogue by means of electronic, mechanical, photocopies, microfilms, recordings or other is forbidden without Tubeclo's authorization.

Catalogue Version: 2023