



RFS HYDRAULICS
CREATING OPPORTUNITIES



DOWTY SEALS

Features

- Used to prevent leakage in a system
- Provide a tight end to end connection in pipeline systems
- Ring-shaped made of both metallic ring and nitrile rubber seal (NBR)



Material Specifications

Metallic ring: Steel/ Stainless Steel

Size Range

Nominal Size: 1/8" – 3" (DN6 – DN80)

Metric Size: M8 – M48

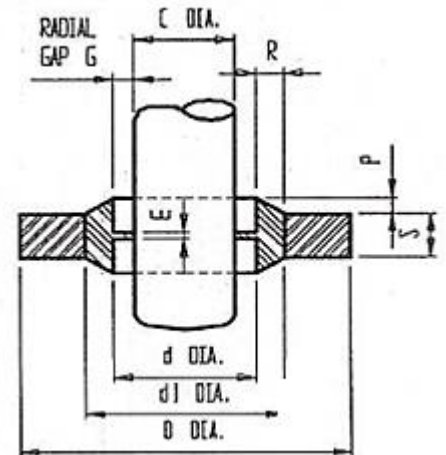
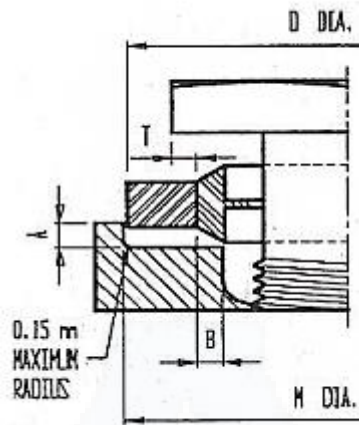
Dowty Seals

Benefits of Using Dowty Seals

- Flexible, hence can fit in a variety of devices
- Suitable for both high and low-pressure systems
- Cost effective for securing connections during installation
- The rubber and metal combination prevents over-compression and extrusion
- It is a safe and secure way of avoiding overfitting

Torque Value for Dowty Seals

Thread Size (Metric)	Thread Size (Imperial)	Thread Size (BSP)	Torque Required (lbs.in)	Torque Required (Nm)
Up to 8	5/16	-	47	5.3
10	3/8	1/8	63	7.1
11	7/16	-	105	11.8
12	½	1/4	140	15.8
14	9/16	.60 x 19	200	22.6
16	5/8	3/8	270	30.5
18	¾	0.75 x 14	360	40.7
20	.825	1/2	500	56.5
22	7/8	5/8	600	67.8
24	1	-	650	73.4
27 and above	1.041	3/4	700	79

DOWTY SEAL


Size	Size Reference	d +/-0.13	C Centralising Lip	E +/-0.05	P +/-0.13	R +/-0.10	d1 +/-0.10	D +0.13	S +/-0.10
M8	866	8.70	6.40	0.35	0.38	0.20	10.40	14.00	1.00
1/8 BSP	820	10.37	8.26				11.84	15.88	2.00
M10	708	10.70	8.05				12.40	16.08	1.50
M12	867	12.70	9.73				14.10	19.00	1.50
1/4 BSP	821	13.74	11.18				15.21	20.57	2.00
M14	868	14.70	11.39				16.40	22.00	1.50
5/8	869	16.51	12.90				18.75	25.40	2.00
M16	870	16.70	13.41				18.40	24.00	1.50
3/8 BSP	823	17.28	14.76				18.75	23.80	2.00
11/16	871	18.16	14.50				19.69	25.40	2.50
M18	872	18.70	14.76				20.40	26.00	1.50
M20	873	20.70	16.76				22.50	28.00	1.50
1/2 BSP	825	21.54	18.24				23.01	28.58	2.50
M22	874	22.70	18.74				24.40	30.00	2.00
5/8 BSP	826	23.49	20.27				24.97	31.75	2.50
M24	875	24.70	20.11				26.40	32.00	2.00
3/4 BSP	827	27.05	23.83				28.53	34.93	2.50
7/8 BSP	829	30.81	27.51	32.29	38.10	2.50			
1 BSP	830	33.89	29.92	36.88	42.80	3.20			
1 1/4 BSP	832	42.93	38.45	45.93	52.38	3.20			
1 1/2 BSP	833	48.44	44.45	51.39	58.60	3.20			
1 3/4 BSP	834	54.89	50.42	58.30	69.85	3.20			
2 BSP	836	60.58	56.26	63.63	73.03	3.20			
2 1/4 BSP	838	66.68	62.36	69.98	79.50	3.20			
2 1/2 BSP	839	76.08	71.50	79.38	90.17	3.20			

RFS Hydraulics

Conditions of Use of Catalogue:

The information in the catalogue are not binding and in order to improve distribution, RFS Hydraulics Sdn Bhd reserves the right to make any change including size and pressure ratings considered necessary at any time and without prior notice. According to the copyright and the civil law, any reproduction (also partial) of figures and texts of this catalogue by means of electronic, mechanical, photocopies, microfilms, recordings or other is forbidden without RFS Hydraulics Sdn Bhd's authorization.
Catalogue Version: 2020