



WALFORM MACHINE

Literature





Figure 1 Walform Machine

What is a Walform machine?

Walform machine (Figure 1) is a portable tube reshaping machine used in a walform plus tube fitting system that produces high quality tube connections.

What are the advantages of the WALFORMplus fitting system?

- Simple and practical assembly processes can be carried out by anyone.
- Small number of components reduces material and logistics costs.
- The system guarantees reliable tube retention, even under high dynamic loads.
- Large volumes of high quality assemblies can be efficiently produced.

What is DIN 2353 and what are the applications of these tube fittings?

DIN 2353 fittings are a range of metric tube fittings made in accordance with ISO 8434-1 standards. They are also known as "Compression-Joint", or "Bite-Type" fittings as the profile ring in the fitting "bites" onto the tube to create the connection. These fittings are used to connect hydraulic tubes together to form a hydraulic line that allows fluid to flow through at high pressures. A simple hydraulic line in a vessel or an oil rig can easily comprise of up to hundreds & thousands of DIN 2353 fittings.

What is the current process for conventional tube fittings and what are the risks involved?

Under the conventional method of connecting tubes using DIN 2353 fittings, the profile ring cuts into the surface of the tube and reshapes it when the nut is tightened. This in turns creates a groove for the fitting to grip onto the tube.

There are two points to note here. Firstly, this procedure can only be performed by trained workmen who have undergone a course on assembly and alignment of DIN 2353 fittings. Secondly, it is more suitable for low volume production, repair works, and in environments where there is no power supply being made available. Having said so, there are still risks involved because the process is prone to human errors. During the tightening process, the workmen can over or under tighten the nuts and when this happens, it can lead to leakages which can pose serious dangers under high pressure. Leakages can lead to slip and fall hazards, fire danger, as well as contamination of the environment. Even a pinhole leak can release hydraulic fluid that is enough to penetrate both clothing and skin. The danger it can bring is definitely life threatening.

What are the benefits of replacing the current process with a walform machine?

With the use of a walform machine, the tubes get reshaped (Figure 2) by simply inserting the tube into the configured walform machine, creating a profile ring in the tube itself. A viton seal acts as the leakage block and tubes can be connected easily just by tightening the nut. With these in place, there is consistency and quality control over all the tubes, making them more reliable and safer than before. The risks that stem from

improper assembly of the tubes as mentioned earlier can be reduced dramatically, creating a safer working environment.

Businesses can also save on manpower costs with the use of walform machines since it only requires one man to operate one machine. Lesser time is also required to configure a tube and this means that businesses can now handle larger volumes instead of being restricted by the use of the conventional method.

On top of all these, the assembly using a walform machine can be repeated multiple times and yet remain intact unlike the conventional method whereby the tube fittings can be damaged by over tightening. This reduces wastage as well as costs of replacing the tube fittings that are damaged in the process.

Furthermore, the use of the walform machine is simple and can be carried out by anyone; businesses need not send their workmen for such training in the future. This reduces the costs of business.

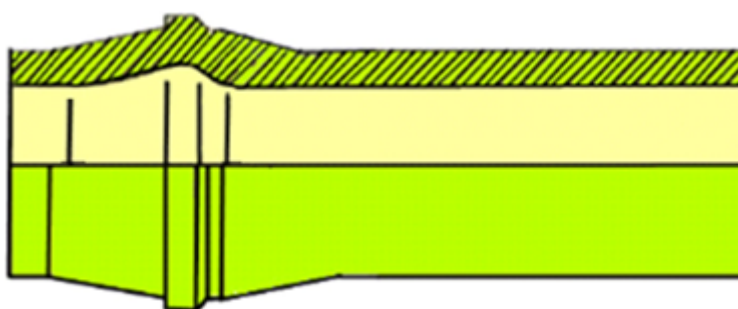


Figure 2 Reshaped Tube

How does the equipment increase or enhance productivity of the business (for example in terms of reduced man- hours, more output or improved work processes)?

The process of reshaping a tube is made simpler with the shift from manual method to partial machine method. The only thing the workmen need to do is to insert the tube into the configured walform machine.

With the risks of leakages being reduced by the use of a walform machine, the performance efficiency can be improved which in turn improves the overall effectiveness of the equipment. This is because in hydraulic machinery, the primary cause of reduced performance efficiency is often caused by internal or external fluid leakages.

Businesses can also avoid purchasing new equipment and tubes prematurely. The life cycle of the equipment and tubes can be extended significantly hence, reducing unnecessary expenses.

The time required to reshape a tube using the walform machine is 5 to 8 seconds versus the manual method at approximately 1 minute. Businesses save approximately 52 seconds to 55 seconds for each tube connection and this transforms to 6 to 11 more tube connections than the manual method for each minute. Thus, the overall productivity and output increases.

Last but not least, businesses do not need as many workmen since only one man is required to operate one machine. Given that more tubes can be produced with lesser manpower, man-hours are reduced substantially too.

How to use a Walform Machine?

Step 1: Prepare the Tubes

- Tube grade suitable for cold-bending and flaring is to be used, pursuant to DIN 1630, Type NBK-3.1 B, material ST 37.4 (E235N). Please make sure tube tolerances are to DIN 2391, Part C. Tolerances to DIN 2462, Part 1, result in problems with clamping and fitting. Tubes made of stainless steel (e.g. 1.4571) must be cold-drawn seamless and scale-free heat-treated, Form m to DIN 17458 and tolerances to DIN 2391, Sheet.

Step 2: Start-up

- To open the tool holder remove the unlocking pin. Turn both tool holder handles anticlockwise. Pull tool holder handles and move aside. (attention: risk of clamping) Insert clamping jaw with minor pressure into the tool holder up to a noticeable catch. Fix reshaping stud handside using the assembly stud.

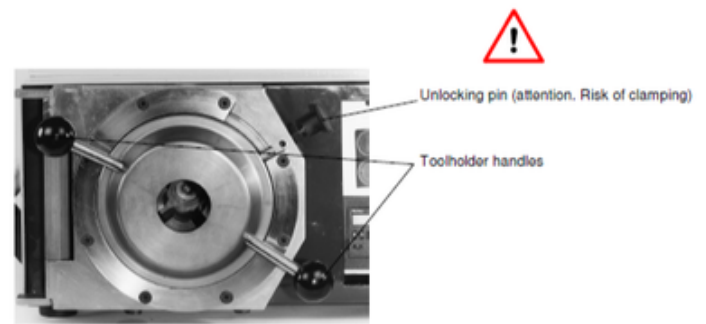


Figure 3 Walform Machine Tool Holder

- Close the toolholder. Swing the toolholder back into position and slide the toolholder back into its mount. Pull out the unlocking pin and turn both toolholder handles clockwise until the unlocking pin engages again.

Step 3: Series assembly

- Insert the tools and close the toolholder. The red fault indicator lamp goes out.
- Press the start key. The machine is in its basic position. This procedure must also be repeated after every tool change.
- Press the start key and function key simultaneously and hold down for approx. 2 sec. The ready indicator (white indicator lamp) lights up. The clamping jaws move to the insertion position.
- Slide the nut onto the tube and insert the tube horizontally up to the stop and hold it tight!

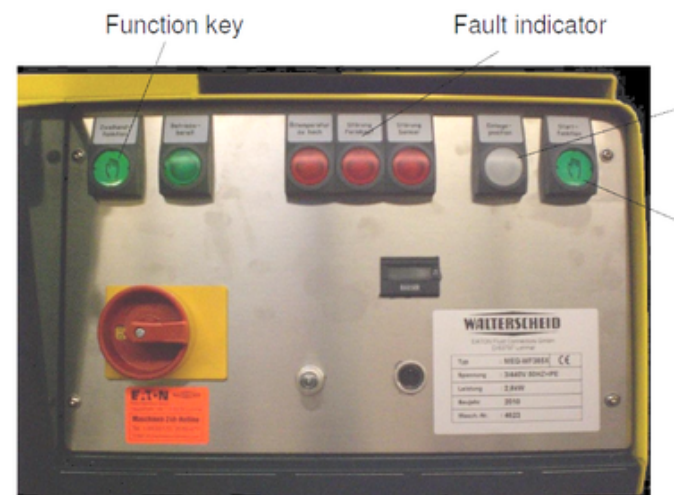


Figure 4 Walform Machine Controls

- Press the start key. The procedure runs automatically and cannot be interrupted. Tube has to be firmly fixed during the process. Remove the reshaped tube.
- Examine the reshaped tube for detectable quality defects, e.g. surface damage, spalling, cracks, etc.
- Check the control diameter

Chuan Kok Hardware & Machinery Pte Ltd

Address : 1783 Geylang Bahru, #01-02, Singapore 339708
Telephone Number : +65 6294 2566
Email Address : info@chuankok.com
Website : www.chuankok.com
Business Registration Number : 198201577Z
Country of Registration : Singapore

Conditions of Use of Catalogue:

The information in the catalogue are not binding and in order to improve distribution, Chuan Kok Hardware & Machinery Pte Ltd reserves the right to make any change including size and pressure ratings considered necessary at any time and without prior notice. According to the copyright and the civil law, any reproduction (also partial) of figures and texts of this catalogue by means of electronic, mechanical, photocopies, microfilms, recordings or other is forbidden without Chuan Kok Hardware & Machinery Pte Ltd's authorization.
Catalogue Version: 2021

