

DOWTY SEALS



Dowty Seals

Features

- Used to prevent leakage in a system
- Provide a tight end to end connection in pipeline systems
- Ring-shaped made of both metallic ring and nitrile rubber seal (NBR)



Material Specifications

Metallic ring: Steel/ Stainless Steel

Size Range

Nominal Size: 1/8" – 3" (DN6 – DN80)

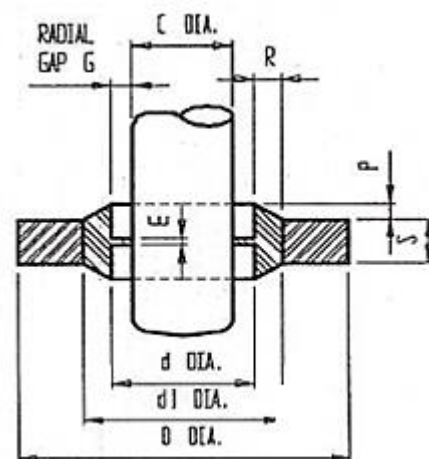
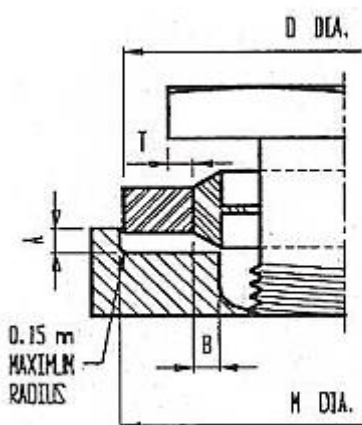
Metric Size: M8 – M48

Benefits of Using Dowty Seals

- Flexible, hence can fit in a variety of devices
- Suitable for both high and low-pressure systems
- Cost effective for securing connections during installation
- The rubber and metal combination prevents over-compression and extrusion
- It is a safe and secure way of avoiding overfitting

Torque Value for Dowty Seals

| Thread Size (Metric) | Thread Size (Imperial) | Thread Size (BSP) | Torque Required (lbs.in) | Torque Required (Nm) |
|----------------------|------------------------|-------------------|--------------------------|----------------------|
| Up to 8 | 5/16 | - | 47 | 5.3 |
| 10 | 3/8 | 1/8 | 63 | 7.1 |
| 11 | 7/16 | - | 105 | 11.8 |
| 12 | ½ | 1/4 | 140 | 15.8 |
| 14 | 9/16 | .60 x 19 | 200 | 22.6 |
| 16 | 5/8 | 3/8 | 270 | 30.5 |
| 18 | ¾ | 0.75 x 14 | 360 | 40.7 |
| 20 | .825 | 1/2 | 500 | 56.5 |
| 22 | 7/8 | 5/8 | 600 | 67.8 |
| 24 | 1 | - | 650 | 73.4 |
| 27 and above | 1.041 | 3/4 | 700 | 79 |

DOWTY SEAL


| Size | Size Reference | d +/-0.13 | C Centralising Lip | E +/-0.05 | P +/-0.13 | R +/-0.10 | d1 +/-0.10 | D +0.13 | S +/-0.10 |
|-----------|----------------|--------------|-----------------------|--------------|--------------|--------------|---------------|------------|--------------|
| M8 | 866 | 8.70 | 6.40 | 0.35 | 0.38 | 0.20 | 10.40 | 14.00 | 1.00 |
| 1/8 BSP | 820 | 10.37 | 8.26 | | | | 11.84 | 15.88 | 2.00 |
| M10 | 708 | 10.70 | 8.05 | | | | 12.40 | 16.08 | 1.50 |
| M12 | 867 | 12.70 | 9.73 | | | | 14.10 | 19.00 | 1.50 |
| 1/4 BSP | 821 | 13.74 | 11.18 | | | | 15.21 | 20.57 | 2.00 |
| M14 | 868 | 14.70 | 11.39 | | | | 16.40 | 22.00 | 1.50 |
| 5/8 | 869 | 16.51 | 12.90 | | | | 18.75 | 25.40 | 2.00 |
| M16 | 870 | 16.70 | 13.41 | | | | 18.40 | 24.00 | 1.50 |
| 3/8 BSP | 823 | 17.28 | 14.76 | | | | 18.75 | 23.80 | 2.00 |
| 11/16 | 871 | 18.16 | 14.50 | | | | 19.69 | 25.40 | 2.50 |
| M18 | 872 | 18.70 | 14.76 | | | | 20.40 | 26.00 | 1.50 |
| M20 | 873 | 20.70 | 16.76 | | | | 22.50 | 28.00 | 1.50 |
| 1/2 BSP | 825 | 21.54 | 18.24 | | | | 23.01 | 28.58 | 2.50 |
| M22 | 874 | 22.70 | 18.74 | | | | 24.40 | 30.00 | 2.00 |
| 5/8 BSP | 826 | 23.49 | 20.27 | | | | 24.97 | 31.75 | 2.50 |
| M24 | 875 | 24.70 | 20.11 | | | | 26.40 | 32.00 | 2.00 |
| 3/4 BSP | 827 | 27.05 | 23.83 | | | | 28.53 | 34.93 | 2.50 |
| 7/8 BSP | 829 | 30.81 | 27.51 | | | | 32.29 | 38.10 | 2.50 |
| 1 BSP | 830 | 33.89 | 29.92 | | | | 36.88 | 42.80 | 3.20 |
| 1 1/4 BSP | 832 | 42.93 | 38.45 | | | | 45.93 | 52.38 | 3.20 |
| 1 1/2 BSP | 833 | 48.44 | 44.45 | 51.39 | 58.60 | 3.20 | | | |
| 1 3/4 BSP | 834 | 54.89 | 50.42 | 58.30 | 69.85 | 3.20 | | | |
| 2 BSP | 836 | 60.58 | 56.26 | 63.63 | 73.03 | 3.20 | | | |
| 2 1/4 BSP | 838 | 66.68 | 62.36 | 69.98 | 79.50 | 3.20 | | | |
| 2 1/2 BSP | 839 | 76.08 | 71.50 | 79.38 | 90.17 | 3.20 | | | |

Chuan Kok Hardware & Machinery Pte Ltd

Address : 1783 Geylang Bahru, #01-02, Singapore 339708
Telephone Number : +65 6294 2566
Email Address : info@chuankok.com
Website : www.chuankok.com
Business Registration Number : 198201577Z
Country of Registration : Singapore

Conditions of Use of Catalogue:

The information in the catalogue are not binding and in order to improve distribution, Chuan Kok Hardware & Machinery Pte Ltd reserves the right to make any change including size and pressure ratings considered necessary at any time and without prior notice.

According to the copyright and the civil law, any reproduction (also partial) of figures and texts of this catalogue by means of electronic, mechanical, photocopies, microfilms, recordings or other is forbidden without Chuan Kok Hardware & Machinery Pte Ltd's authorization.

Catalogue Version: 2021

