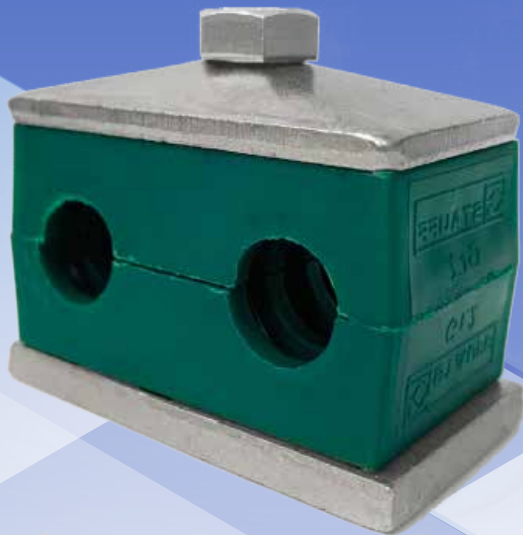


# TUBECLO TUBE CLAMPS

## Twin Series



## Twin Series Pipe Clamps

### Specification

According to DIN 3015, Part 3

### Size Range

- Standard Series (6 – 102mm)
- Heavy Series (6 – 406mm)
- Twin Series (6 – 42mm)



### Accessories Material

- Galvanized Carbon Steel ST 37 (W3)
- Stainless Steel SS316 (W5)

### Clamp Body Material and Temperature Range

- Polypropylene, PP (-30 Deg C to 90 Deg C)
- Polyamide, PA (-40 Deg C to 120 Deg C)
- Aluminium, AL (Up to 300 Deg C)

### Twin Series Clamps Recommended Torque Values

Group	Polypropylene Tightening Torque (N-m)	Polypropylene Tightening Torque (ft-lb)	Polyamide Tightening Torque (N-m)	Polyamide Tightening Torque (ft-lb)
1D	5	4	5	4
2D	12	9	12	9
3D	12	9	12	9
4D	12	9	12	9
5D	8	6	8	6

**Ordering Information**

PC - T - PP - 1 - 3D - 006 - C  
 I II III IV V VI VII

<b>I</b>	<b>Type of Item</b>	:	PC	Pipe Clamp
<b>II</b>	<b>Series</b>	:	T	Twin
<b>III</b>	<b>Material of Clamp Body</b>	:	PP PA	Polypropylene Polyamide
<b>IV</b>	<b>Group</b>	:	1 2 3 4 5 6	Complete Set Cover Plate with Rail Nut Set Cover Plate Only Set Double Stack Set Group Weld Plate Only Mounting Rail Only
<b>V</b>	<b>Size Series</b>	:	1D 2D 3D 4D 5D	Group 1D Group 2D Group 3D Group 4D Group 5D
<b>VI</b>	<b>Pipe O.D.</b>	:	MM	Metric Size
<b>VII</b>	<b>Material of Metal Parts</b>	:	C SS	Carbon Steel Stainless Steel SS316

**G1 TWIN SERIES COMPLETE SET (HEX BOLT + COVER PLATE + CLAMP BODY + WELD PLATE)**



**Pipe Clamp Assembly**



**Cover Plate**



**Weld Plate**



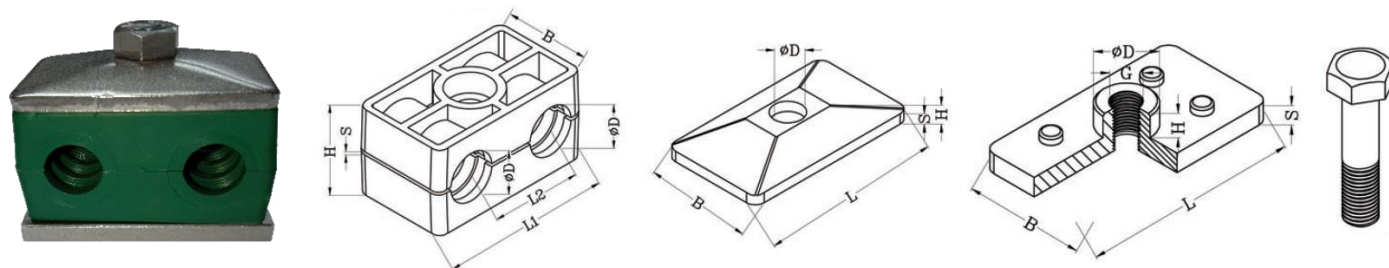
**Hex Bolt**



**Polypropylene Clamp Body**  
Work Temperature  $-30^{\circ}\text{C} \sim 90^{\circ}\text{C}$



**Polyamide Clamp Body**  
Work Temperature  $-40^{\circ}\text{C} \sim 120^{\circ}\text{C}$

**G1 TWIN SERIES COMPLETE SET (HEX BOLT + COVER PLATE + CLAMP BODY + WELD PLATE)**


Series	Order Code	D1/D2 Pipe O.D.	Inch Bore	Inch O.D.	Clamp Body					Cover Plate					Weld Plate					Bolt	
					L1	L2	H	S	B	L	B	H	S	D	L	B	S	H	D		G
1D	PC-T**-1-1D-006.*	6/6			36	20	26.5	0.6	30	34	30	7	3	7	37	30	3	6.5	12	M6	M6 x 35
	PC-T**-1-1D-006.4.*	6.4/6.4	1/4																		
	PC-T**-1-1D-008.*	8/8	5/16																		
	PC-T**-1-1D-009.5.*	9.5/9.5	3/8																		
	PC-T**-1-1D-010.*	10/10	1/8																		
PC-T**-1-1D-012.*	12/12																				
2D	PC-T**-1-2D-012.7.*	12.7/12.7		1/2	53	29	26.5	0.7	30	52	30	7	3	9	55	30	5	6	14	M8	M8 x 35
	PC-T**-1-2D-013.5.*	13.5/13.5	1/4																		
	PC-T**-1-2D-014.*	14/14																			
	PC-T**-1-2D-015.*	15/15																			
	PC-T**-1-2D-016.*	16/16	5/8																		
PC-T**-1-2D-017.2.*	17.2/17.2	3/8																			
PC-T**-1-2D-018.*	18/18																				
3D	PC-T**-1-3D-019.*	19/19		3/4	67	36	36.5	0.7	30	65	30	7	3	9	70	30	5	6	14	M8	M8 x 45
	PC-T**-1-3D-020.*	20/20																			
	PC-T**-1-3D-021.3.*	21.3/21.3	1/2																		
	PC-T**-1-3D-022.*	22/22	7/8																		
	PC-T**-1-3D-025.*	25/25																			
PC-T**-1-3D-025.4.*	25.4/25.4	1																			
4D	PC-T**-1-4D-026.9.*	26.9/26.9	3/4		80	45	38	0.7	30	79	30	7	3	9	85	30	5	6	14	M8	M8 x 50
	PC-T**-1-4D-028.*	28/28																			
PC-T**-1-4D-030.*	30/30																				
5D	PC-T**-1-5D-032.*	32/32			106	56	52	0.7	30	102	30	7	3	9	110	30	5	6	14	M8	M8 x 60
	PC-T**-1-5D-033.7.*	33.7/33.7																			
	PC-T**-1-5D-035.*	35/35																			
	PC-T**-1-5D-038.*	38/38																			
	PC-T**-1-5D-040.*	40/40																			
PC-T**-1-5D-042.*	42/42																				

**G2 TWIN SERIES COVER PLATE WITH RAIL NUT SET (HEX BOLT + COVER PLATE + CLAMP BODY + RAIL NUT)**



**Pipe Clamp Assembly**



**Cover Plate**



**Hex Bolt**



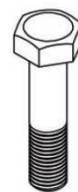
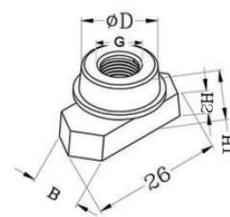
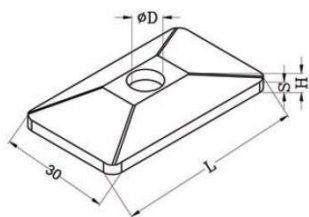
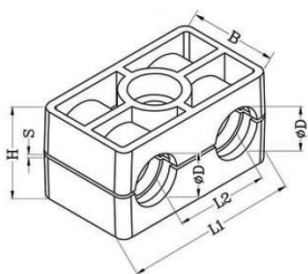
**Rail Nut**



**Polypropylene Clamp Body**  
Work Temperature -30°C ~ 90°C



**Polyamide Clamp Body**  
Work Temperature -40°C ~ 120°C

**G2 TWIN SERIES COVER PLATE WITH RAIL NUT SET (HEX BOLT + COVER PLATE + CLAMP BODY + RAIL NUT)**


Series	Order Code	D1/D2 Pipe O.D.	Inch Bore	Inch O.D.	Clamp Body					Cover Plate				Rail Nut					Bolt
					L1	L2	H	S	B	L	H	S	D	B	H1	H2	D	G	
1D	PC-T**-2-1D-006.*	6/6			36	20	26.5	0.6	30	34	7	3	7	10.2	13.5	5.5	12	M6	M6 x 35
	PC-T**-2-1D-006.4.*	6.4/6.4	1/4																
	PC-T**-2-1D-008.*	8/8	5/16																
	PC-T**-2-1D-009.5.*	9.5/9.5	3/8																
	PC-T**-2-1D-010.*	10/10	1/8																
2D	PC-T**-2-2D-012.*	12/12			53	29	26.5	0.7	30	52	7	3	9	10.4	13	5	14	M8	M8 x 35
	PC-T**-2-2D-012.7.*	12.7/12.7	1/2																
	PC-T**-2-2D-013.5.*	13.5/13.5	1/4																
	PC-T**-2-2D-014.*	14/14																	
	PC-T**-2-2D-015.*	15/15																	
	PC-T**-2-2D-016.*	16/16	5/8																
3D	PC-T**-2-2D-017.2.*	17.2/17.2	3/8		67	36	36.5	0.7	30	65	7	3	9	10.4	13	5	14	M8	M8 x 45
	PC-T**-2-2D-018.*	18/18																	
	PC-T**-2-3D-019.*	19/19	3/4																
	PC-T**-2-3D-020.*	20/20																	
	PC-T**-2-3D-021.3.*	21.3/21.3	1/2																
4D	PC-T**-2-3D-022.*	22/22	7/8		80	45	38	0.7	30	79	7	3	9	10.4	13	5	14	M8	M8 x 50
	PC-T**-2-3D-025.*	25/25																	
	PC-T**-2-3D-025.4.*	25.4/25.4	1																
5D	PC-T**-2-4D-026.9.*	26.9/26.9	3/4		106	56	52	0.7	30	102	7	3	9	10.4	13	5	14	M8	M8 x 60
	PC-T**-2-4D-028.*	28/28																	
	PC-T**-2-4D-030.*	30/30																	
	PC-T**-2-5D-032.*	32/32																	
	PC-T**-2-5D-033.7.*	33.7/33.7																	
	PC-T**-2-5D-035.*	35/35																	

**G3 TWIN SERIES COVER PLATE ONLY SET (HEX BOLT + COVER PLATE + CLAMP BODY)**



**Pipe Clamp Assembly**



**Cover Plate**



**Hex Bolt**

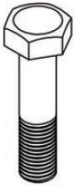
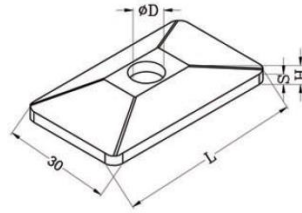
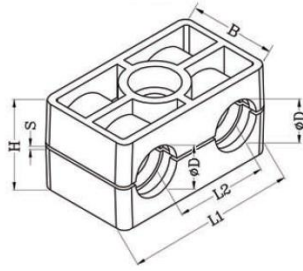


**Polypropylene Clamp Body**  
Work Temperature -30°C ~ 90°C



**Polyamide Clamp Body**  
Work Temperature -40°C ~ 120°C



**G3 TWIN SERIES COVER PLATE ONLY SET (HEX BOLT + COVER PLATE + CLAMP BODY)**


Series	Order Code	D1/D2 Pipe O.D.	Inch Bore	Inch O.D.	Clamp Body					Cover Plate				Bolt
					L1	L2	H	S	B	L	H	S	D	
1D	PC-T**-3-1D-006.*	6/6			36	20	26.5	0.6	30	34	7	3	7	M6 x 35
	PC-T**-3-1D-006.4.*	6.4/6.4		1/4										
	PC-T**-3-1D-008.*	8/8		5/16										
	PC-T**-3-1D-009.5.*	9.5/9.5		3/8										
	PC-T**-3-1D-010.*	10/10	1/8											
PC-T**-3-1D-012.*	12/12													
2D	PC-T**-3-2D-012.7.*	12.7/12.7		1/2	53	29	26.5	0.7	30	52	7	3	9	M8 x 35
	PC-T**-3-2D-013.5.*	13.5/13.5	1/4											
	PC-T**-3-2D-014.*	14/14												
	PC-T**-3-2D-015.*	15/15												
	PC-T**-3-2D-016.*	16/16		5/8										
	PC-T**-3-2D-017.2.*	17.2/17.2	3/8											
PC-T**-3-2D-018.*	18/18													
3D	PC-T**-3-3D-019.*	19/19		3/4	67	36	36.5	0.7	30	65	7	3	9	M8 x 45
	PC-T**-3-3D-020.*	20/20												
	PC-T**-3-3D-021.3.*	21.3/21.3	1/2											
	PC-T**-3-3D-022.*	22/22		7/8										
	PC-T**-3-3D-025.*	25/25												
PC-T**-3-3D-025.4.*	25.4/25.4		1											
4D	PC-T**-3-4D-026.9.*	26.9/26.9	3/4		80	45	38	0.7	30	79	7	3	9	M8 x 50
	PC-T**-3-4D-028.*	28/28												
	PC-T**-3-4D-030.*	30/30												
5D	PC-T**-3-5D-032.*	32/32			106	56	52	0.7	30	102	7	3	9	M8 x 60
	PC-T**-3-5D-033.7.*	33.7/33.7												
	PC-T**-3-5D-035.*	35/35												
	PC-T**-3-5D-038.*	38/38												
	PC-T**-3-5D-040.*	40/40												
PC-T**-3-5D-042.*	42/42													

**G4 TWIN SERIES DOUBLE STACK SET (STACKING BOLT + SAFETY LOCKING PLATE + CLAMP BODY)**



**Pipe Clamp Assembly**



**Stacking Bolt**



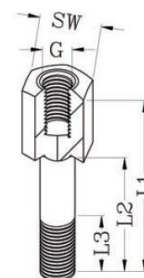
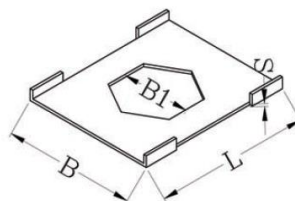
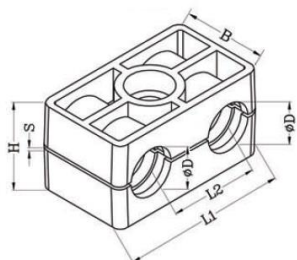
**Safety Locking Plate**



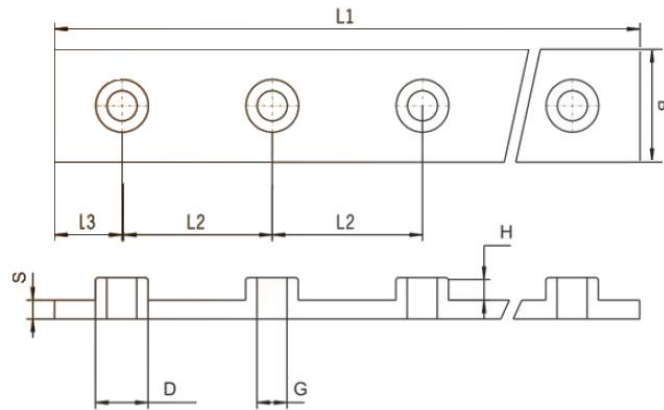
**Polypropylene Clamp Body**  
Work Temperature -30°C ~ 90°C



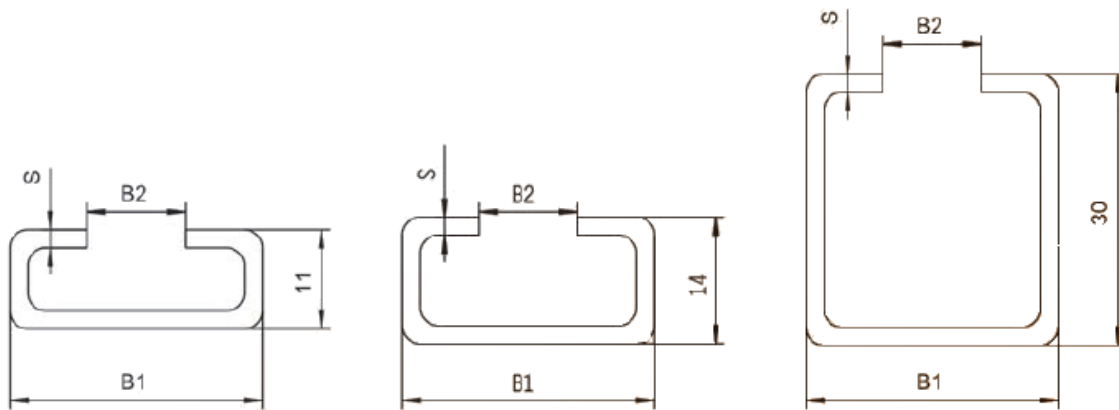
**Polyamide Clamp Body**  
Work Temperature -40°C ~ 120°C

**G4 TWIN SERIES DOUBLE STACK SET (STACKING BOLT + SAFETY LOCKING PLATE + CLAMP BODY)**


Series	Order Code	D1/D2 Pipe O.D.	Inch Bore	Inch O.D.	Clamp Body					Safety Locking Plate				Stacking Bolt				
					L1	L2	H	S	B	L	B	B1	S	G	L1	L2	L3	SW
1D	PC-T**-4-1D-006.*	6/6			36	20	26.5	0.6	30	27	22	11.2	0.5	M6	34	20	12	11
	PC-T**-4-1D-006.4.*	6.4/6.4	1/4															
	PC-T**-4-1D-008.*	8/8	5/16															
	PC-T**-4-1D-009.5.*	9.5/9.5	3/8															
	PC-T**-4-1D-010.*	10/10	1/8															
	PC-T**-4-1D-012.*	12/12																
2D	PC-T**-4-2D-012.7.*	12.7/12.7		1/2	53	29	26.5	0.7	30	27	22	12.2	0.5	M8	33	20	12	12
	PC-T**-4-2D-013.5.*	13.5/13.5	1/4															
	PC-T**-4-2D-014.*	14/14																
	PC-T**-4-2D-015.*	15/15																
	PC-T**-4-2D-016.*	16/16	5/8															
	PC-T**-4-2D-017.2.*	17.2/17.2	3/8															
3D	PC-T**-4-3D-019.*	19/19		3/4	67	36	36.5	0.7	30	27	22	12.2	0.5	M8	44	29	12	12
	PC-T**-4-3D-020.*	20/20																
	PC-T**-4-3D-021.3.*	21.3/21.3	1/2															
	PC-T**-4-3D-022.*	22/22	7/8															
	PC-T**-4-3D-025.*	25/25																
	PC-T**-4-3D-025.4.*	25.4/25.4	1															
4D	PC-T**-4-4D-026.9.*	26.9/26.9		3/4	80	45	38	0.7	30	27	22	12.2	0.5	M8	49	34	12	12
	PC-T**-4-4D-028.*	28/28																
	PC-T**-4-4D-030.*	30/30																
5D	PC-T**-4-5D-032.*	32/32			106	56	52	0.7	30	27	22	12.2	0.5	M8	61	46	12	12
	PC-T**-4-5D-033.7.*	33.7/33.7																
	PC-T**-4-5D-035.*	35/35																
	PC-T**-4-5D-038.*	38/38																
	PC-T**-4-5D-040.*	40/40																
	PC-T**-4-5D-042.*	42/42																

**G5 TWIN SERIES GROUP WELD PLATE ONLY**


Series	Order Code	Group Weld Plate							
		L1	L2	L3	B	S	H	D	G
1D	PC-T-5-1D	196	40	18	30	3	6.5	12	M6
2D	PC-T-5-2D	288	58	28	30	5	6	14	M8
3D	PC-T-5-3D	358	72	35	30	5	6	14	M8
4D	PC-T-5-4D	445	90	42	30	5	6	14	M8
5D	PC-T-5-5D	558	112	55	30	5	6	14	M8

**G6 TWIN SERIES MOUNTING RAIL ONLY**


Order Code	Mounting Rail		
	B1	B2	S
PC-T-6-11	28	11	2
PC-T-6-14			
PC-T-6-30			

## Chuan Kok Hardware & Machinery Pte Ltd

Address : 1783 Geylang Bahru, #01-02, Singapore 339708  
Telephone Number : +65 6294 2566  
Email Address : [info@chuankok.com](mailto:info@chuankok.com)  
Website : [www.chuankok.com](http://www.chuankok.com)  
Business Registration Number : 198201577Z  
Country of Registration : Singapore

### Conditions of Use of Catalogue:

The information in the catalogue are not binding and in order to improve distribution, Chuan Kok Hardware & Machinery Pte Ltd reserves the right to make any change including size and pressure ratings considered necessary at any time and without prior notice. According to the copyright and the civil law, any reproduction (also partial) of figures and texts of this catalogue by means of electronic, mechanical, photocopies, microfilms, recordings or other is forbidden without Chuan Kok Hardware & Machinery Pte Ltd's authorization.  
Catalogue Version: 2021

