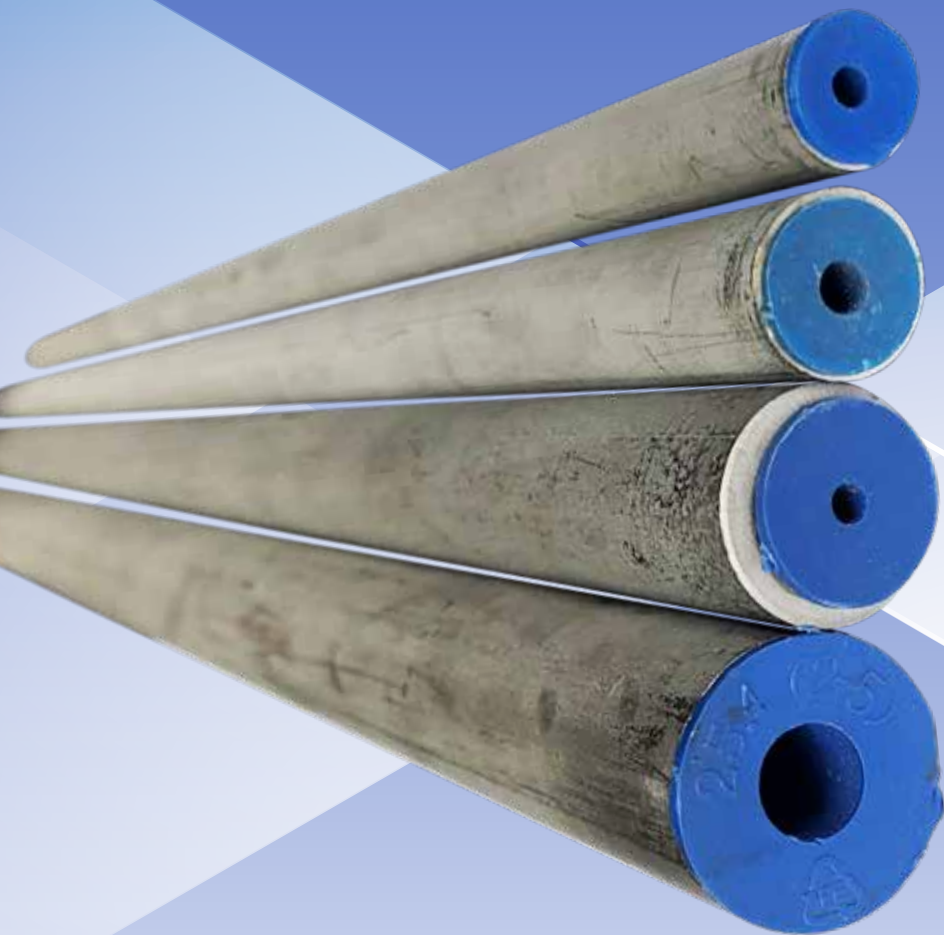


STAINLESS STEEL TUBES



Stainless Steel Tubes

Dimension Specifications

ASTM A269 - Standard Specification for Seamless and Welded Austenitic Stainless Steel Tubing for General Service.

ASTM A213 - Standard Specification for Seamless Ferritic and Austenitic Alloy-Steel Boiler, Super Heater, and Heat-Exchanger Tubes.

Material Specifications

TP316

TP316L

Finishing

Annealed and Pickled (AP)

Polished, 320 Grit

Bright Annealed (BA)

Recommended Bend Radius

A bend radius of 3x the external tube diameter is recommended for cold bending of tubes with tube benders or by hand. (As per Figure 1)

Welding Suitability

Tubes made of TP316 & TP316L are suitable for arc welding according to usual techniques. The welding filler should be selected in accordance with DIN EN 1600 and DIN EN 12072 part 1 taking into account the type of application and the welding technique.

Chemical Composition

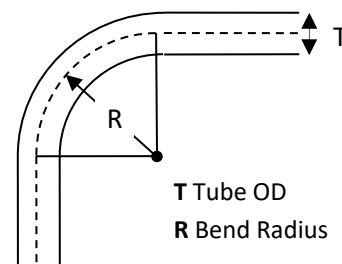


Figure 1 Recommended Bend Radius

SS316/316L Chemical Composition (%)								
	C	Mn	P	S	Si	Ni	Cr	Mo
Min.						10.0	16.0	2.00
Max.	0.030	2.000	0.045	0.030	1.000	14.0	18.0	3.00

Mechanical Properties of the Tubes at Room Temperature

SS316/SS316L	Tensile Strength R_m (N/mm ²)	Upper Yield Point R_{eH} (N/mm ²) Min.	Elongation at Rupture A_5 (%) Min.	Hardness Test HRB
Min.	515	205	35	
Max.				80

2.5% Minimum Molybdenum Tubes (Mo > 2.5%)

2.5% minimum molybdenum specifications is used to enhance the corrosion resistance of seamless tubes. At Chuan Kok Hardware & Machinery Pte Ltd, we keep stock of a large range of Mo > 2.5% tubes.

Elevated Temperature Factor

Elevated Temperature Rating Factor is calculated using as per ASME B31.3. Dual Grades such as TP316/316L meet the requirements for the lower maximum carbon content of the L grades and the higher minimum yield and tensile strength of the non-L grades.

°F	-76	200	400	600	800	1000
°C	-60	93	204	315	426	537
Rating Factor	1.00	1.00	0.96	0.85	0.79	0.76

Ordering Information

 TS - 01 - AP - MM - 6 X 1.5
 I II III IV V VI

I Type of Item
 TS Stainless Steel Tubes

II Material Grade
 01 SS316/SS316L
 02 SS316/SS316L MO>2.5%

III Item Finish
 AP Annealed & Pickled
 BA Bright Annealed
 PO Polished Grit 320

IV Size Designator
 MM Metric Size
 IN Inches Size
 NB Nominal Bore Size

V Tube OD Sizes
For Metric OD Sizes

Size	6MM	12MM	20MM	35MM	38MM	42MM
Code	6	12	20		35	38	42

V Tube OD Sizes
For Inch OD Sizes

Size	1/8"	1/4"	5/16"	3/8"	1/2"	5/8"	3/4"	7/8"
Code	02	04	05	06	08	10	12	14
Size	1"	1 1/8"	1 1/4"	1 1/2"	2"	2 1/2"	3"	4"
Code	16	18	20	24	32	40	48	64

VI Tube Thickness Sizes
For Metric Sizes

Size	1.0MM	1.5MM	2.0MM	4.0MM	5.0MM	10.0MM
Code	1.0	1.5	2.0		4.0	5.0	10.0

For Inch Sizes

Size	0.035"	0.049"	0.065"	0.083"	0.095"
Code	035	049	065	083	095
Size	0.109"	0.120"	0.134"	0.156"	0.188"
Code	109	120	134	156	188

Seamless Stainless Steel Tube ASTM A269/A213 TP316/316L Working Pressure Table

No.	Part No	Description	Working Pressure (Bar)	Burst Pressure (Bar)	Weight /6 MTR (Kg)
1	TS-01-AP-IN-04X028	1/4"OD x 0.028" THK x 6 MTR SS316/316L TUBE (ANNEALED & PICKLED)	371	1068	0.60
2	TS-01-AP-IN-04X035	1/4"OD x 0.035" THK x 6 MTR SS316/316L TUBE (ANNEALED & PICKLED)	464	1336	0.73
3	TS-01-AP-IN-04X049	1/4"OD x 0.049" THK x 6 MTR SS316/316L TUBE (ANNEALED & PICKLED)	647	1863	0.95
4	TS-01-AP-IN-04X065	1/4"OD x 0.065" THK x 6 MTR SS316/316L TUBE (ANNEALED & PICKLED)	840	2419	1.14
5	TS-01-AP-IN-05X049	5/16"OD x 0.049" THK x 6 MTR SS316/316L TUBE (ANNEALED & PICKLED)	517	1490	1.24
6	TS-01-AP-IN-06X035	3/8"OD x 0.035" THK x 6 MTR SS316/316L TUBE (ANNEALED & PICKLED)	309	890	1.15
7	TS-01-AP-IN-06X049	3/8"OD x 0.049" THK x 6 MTR SS316/316L TUBE (ANNEALED & PICKLED)	431	1241	1.54
8	TS-01-AP-IN-06X065	3/8"OD x 0.065" THK x 6 MTR SS316/316L TUBE (ANNEALED & PICKLED)	560	1612	1.91
9	TS-01-AP-IN-06X083	3/8"OD x 0.083" THK x 6 MTR SS316/316L TUBE (ANNEALED & PICKLED)	733	2112	2.34
10	TS-01-AP-IN-08X035	1/2"OD x 0.035" THK x 6 MTR SS316/316L TUBE (ANNEALED & PICKLED)	232	668	1.57
11	TS-01-AP-IN-08X049	1/2"OD x 0.049" THK x 6 MTR SS316/316L TUBE (ANNEALED & PICKLED)	323	931	2.12
12	TS-01-AP-IN-08X065	1/2"OD x 0.065" THK x 6 MTR SS316/316L TUBE (ANNEALED & PICKLED)	420	1209	2.67
13	TS-01-AP-IN-08X083	1/2"OD x 0.083" THK x 6 MTR SS316/316L TUBE (ANNEALED & PICKLED)	550	1585	3.34
14	TS-01-AP-IN-08X120	1/2"OD x 0.120" THK x 6 MTR SS316/316L TUBE (ANNEALED & PICKLED)	795	2290	4.40
15	TS-01-AP-IN-10X049	5/8"OD x 0.049" THK x 6 MTR SS316/316L TUBE (ANNEALED & PICKLED)	260	748	2.71
16	TS-01-AP-IN-12X049	3/4"OD x 0.049" THK x 6 MTR SS316/316L TUBE (ANNEALED & PICKLED)	216	621	3.30
17	TS-01-AP-IN-12X065	3/4"OD x 0.065" THK x 6 MTR SS316/316L TUBE (ANNEALED & PICKLED)	280	806	4.20
18	TS-01-AP-IN-12X083	3/4"OD x 0.083" THK x 6 MTR SS316/316L TUBE (ANNEALED & PICKLED)	367	1057	5.34
19	TS-01-AP-IN-12X109	3/4"OD x 0.109" THK x 6 MTR SS316/316L TUBE (ANNEALED & PICKLED)	482	1387	6.74
20	TS-01-AP-IN-16X035	1"OD x 0.035" THK x 6 MTR SS316/316L TUBE (ANNEALED & PICKLED)	116	334	3.26
21	TS-01-AP-IN-16X049	1"OD x 0.049" THK x 6 MTR SS316/316L TUBE (ANNEALED & PICKLED)	162	466	4.48
22	TS-01-AP-IN-16X065	1"OD x 0.065" THK x 6 MTR SS316/316L TUBE (ANNEALED & PICKLED)	210	605	5.72
23	TS-01-AP-IN-16X083	1"OD x 0.083" THK x 6 MTR SS316/316L TUBE (ANNEALED & PICKLED)	275	792	7.34
24	TS-01-AP-IN-16X109	1"OD x 0.109" THK x 6 MTR SS316/316L TUBE (ANNEALED & PICKLED)	361	1040	9.37

Note: Working Pressure Calculation: Calculated from ASME B31.1, with values from AMSE B31.3

Seamless Stainless Steel Tube ASTM A269/A213 TP316/316L Working Pressure Table

No.	Part No	Description	Working Pressure (Bar)	Burst Pressure (Bar)	Weight /6 MTR (Kg)
25	TS-01-AP-IN-16X120	1"OD x 0.120" THK x 6 MTR SS316/316L TUBE (ANNEALED & PICKLED)	398	1146	10.19
26	TS-01-AP-IN-20X083	1 1/4"OD x 0.083" THK x 6 MTR SS316/316L TUBE (ANNEALED & PICKLED)	220	634	9.35
27	TS-01-AP-IN-20X109	1 1/4"OD x 0.109" THK x 6 MTR SS316/316L TUBE (ANNEALED & PICKLED)	289	832	12.00
28	TS-01-AP-IN-20X120	1 1/4"OD x 0.120" THK x 6 MTR SS316/316L TUBE (ANNEALED & PICKLED)	318	916	13.08
29	TS-01-AP-IN-24X120	1 1/2"OD x 0.120" THK x 6 MTR SS316/316L TUBE (ANNEALED & PICKLED)	265	764	15.98
30	TS-01-AP-IN-24X184	1 1/2"OD x 0.184" THK x 6 MTR SS316/316L TUBE (ANNEALED & PICKLED)	406	1169	23.33
31	TS-01-AP-IN-24X188	1 1/2"OD x 0.188" THK x 6 MTR SS316/316L TUBE (ANNEALED & PICKLED)	415	1196	23.78
32	TS-01-AP-MM-4X1.0	4MM OD x 1.0MM THK x 6 MTR SS316/316L TUBE (ANNEALED & PICKLED)	828	2385	0.45
33	TS-01-AP-MM-5X1.0	5MM OD x 1.0MM THK x 6 MTR SS316/316L TUBE (ANNEALED & PICKLED)	662	1908	0.60
34	TS-01-AP-MM-6X1.0	6MM OD x 1.0MM THK x 6 MTR SS316/316L TUBE (ANNEALED & PICKLED)	552	1590	0.75
35	TS-01-AP-MM-6X1.5	6MM OD x 1.5MM THK x 6 MTR SS316/316L TUBE (ANNEALED & PICKLED)	828	2385	1.01
36	TS-01-AP-MM-8X1.0	8MM OD x 1.0MM THK x 6 MTR SS316/316L TUBE (ANNEALED & PICKLED)	414	1193	1.05
37	TS-01-AP-MM-8X1.5	8MM OD x 1.5MM THK x 6 MTR SS316/316L TUBE (ANNEALED & PICKLED)	621	1789	1.46
38	TS-01-AP-MM-8X2.0	8MM OD x 2.0MM THK x 6 MTR SS316/316L TUBE (ANNEALED & PICKLED)	828	2385	1.79
39	TS-01-AP-MM-8X2.5	8MM OD x 2.5MM THK x 6 MTR SS316/316L TUBE (ANNEALED & PICKLED)	1035	2981	2.06
40	TS-01-AP-MM-10X1.0	10MM OD x 1.0MM THK x 6 MTR SS316/316L TUBE (ANNEALED & PICKLED)	331	954	1.35
41	TS-01-AP-MM-10X1.2	10MM OD x 1.2MM THK x 6 MTR SS316/316L TUBE (ANNEALED & PICKLED)	397	1145	1.58
42	TS-01-AP-MM-10X1.5	10MM OD x 1.5MM THK x 6 MTR SS316/316L TUBE (ANNEALED & PICKLED)	497	1431	1.91
43	TS-01-AP-MM-10X2.0	10MM OD x 2.0MM THK x 6 MTR SS316/316L TUBE (ANNEALED & PICKLED)	662	1908	2.39
44	TS-01-AP-MM-10X2.5	10MM OD x 2.5MM THK x 6 MTR SS316/316L TUBE (ANNEALED & PICKLED)	828	2385	2.80
45	TS-01-AP-MM-12X1.0	12MM OD x 1.0MM THK x 6 MTR SS316/316L TUBE (ANNEALED & PICKLED)	276	795	1.64
46	TS-01-AP-MM-12X1.2	12MM OD x 1.2MM THK x 6 MTR SS316/316L TUBE (ANNEALED & PICKLED)	331	954	1.94
47	TS-01-AP-MM-12X1.5	12MM OD x 1.5MM THK x 6 MTR SS316/316L TUBE (ANNEALED & PICKLED)	414	1193	2.35
48	TS-01-AP-MM-12X2.0	12MM OD x 2.0MM THK x 6 MTR SS316/316L TUBE (ANNEALED & PICKLED)	552	1590	2.99

Note: Working Pressure Calculation: Calculated from ASME B31.1, with values from AMSE B31.3

Seamless Stainless Steel Tube ASTM A269/A213 TP316/316L Working Pressure Table

No.	Part No	Description	Working Pressure (Bar)	Burst Pressure (Bar)	Weight /6 MTR (Kg)
49	TS-01-AP-MM-12X2.5	12MM OD x 2.5MM THK x 6 MTR SS316/316L TUBE (ANNEALED & PICKLED)	690	1988	3.55
50	TS-01-AP-MM-12X3.0	12MM OD x 3.0MM THK x 6 MTR SS316/316L TUBE (ANNEALED & PICKLED)	828	2385	4.06
51	TS-01-AP-MM-14X1.5	14MM OD x 1.5MM THK x 6 MTR SS316/316L TUBE (ANNEALED & PICKLED)	355	1022	2.80
52	TS-01-AP-MM-14X2.0	14MM OD x 2.0MM THK x 6 MTR SS316/316L TUBE (ANNEALED & PICKLED)	473	1363	3.59
53	TS-01-AP-MM-14X2.5	14MM OD x 2.5MM THK x 6 MTR SS316/316L TUBE (ANNEALED & PICKLED)	591	1704	4.30
54	TS-01-AP-MM-14X3.0	14MM OD x 3.0MM THK x 6 MTR SS316/316L TUBE (ANNEALED & PICKLED)	710	2044	4.93
55	TS-01-AP-MM-15X1.5	15MM OD x 1.5MM THK x 6 MTR SS316/316L TUBE (ANNEALED & PICKLED)	331	954	3.03
56	TS-01-AP-MM-15X2.0	15MM OD x 2.0MM THK x 6 MTR SS316/316L TUBE (ANNEALED & PICKLED)	442	1272	3.89
57	TS-01-AP-MM-15X2.5	15MM OD x 2.5MM THK x 6 MTR SS316/316L TUBE (ANNEALED & PICKLED)	552	1590	4.67
58	TS-01-AP-MM-15X3.0	15MM OD x 3.0MM THK x 6 MTR SS316/316L TUBE (ANNEALED & PICKLED)	552	1590	4.67
59	TS-01-AP-MM-16X1.5	16MM OD x 1.5MM THK x 6 MTR SS316/316L TUBE (ANNEALED & PICKLED)	311	894	3.25
60	TS-01-AP-MM-16X2.0	16MM OD x 2.0MM THK x 6 MTR SS316/316L TUBE (ANNEALED & PICKLED)	414	1193	4.18
61	TS-01-AP-MM-16X2.5	16MM OD x 2.5MM THK x 6 MTR SS316/316L TUBE (ANNEALED & PICKLED)	518	1491	5.04
62	TS-01-AP-MM-16X3.0	16MM OD x 3.0MM THK x 6 MTR SS316/316L TUBE (ANNEALED & PICKLED)	621	1789	5.83
63	TS-01-AP-MM-18X1.5	18MM OD x 1.5MM THK x 6 MTR SS316/316L TUBE (ANNEALED & PICKLED)	276	795	3.70
64	TS-01-AP-MM-18X2.0	18MM OD x 2.0MM THK x 6 MTR SS316/316L TUBE (ANNEALED & PICKLED)	368	1060	4.78
65	TS-01-AP-MM-18X3.0	18MM OD x 3.0MM THK x 6 MTR SS316/316L TUBE (ANNEALED & PICKLED)	552	1590	6.77
66	TS-01-AP-MM-20X1.5	20MM OD x 1.5MM THK x 6 MTR SS316/316L TUBE (ANNEALED & PICKLED)	248	716	4.15
67	TS-01-AP-MM-20X2.0	20MM OD x 2.0MM THK x 6 MTR SS316/316L TUBE (ANNEALED & PICKLED)	331	954	5.38
68	TS-01-AP-MM-20X2.5	20MM OD x 2.5MM THK x 6 MTR SS316/316L TUBE (ANNEALED & PICKLED)	414	1193	6.54
69	TS-01-AP-MM-20X3.0	20MM OD x 3.0MM THK x 6 MTR SS316/316L TUBE (ANNEALED & PICKLED)	497	1431	7.62
70	TS-01-AP-MM-22X1.5	22MM OD x 1.5MM THK x 6 MTR SS316/316L TUBE (ANNEALED & PICKLED)	226	650	4.60
71	TS-01-AP-MM-22X2.0	22MM OD x 2.0MM THK x 6 MTR SS316/316L TUBE (ANNEALED & PICKLED)	301	867	5.98
72	TS-01-AP-MM-22X2.5	22MM OD x 2.5MM THK x 6 MTR SS316/316L TUBE (ANNEALED & PICKLED)	376	1084	7.29

Note: Working Pressure Calculation: Calculated from ASME B31.1, with values from AMSE B31.3

Seamless Stainless Steel Tube ASTM A269/A213 TP316/316L Working Pressure Table

No.	Part No	Description	Working Pressure (Bar)	Burst Pressure (Bar)	Weight /6 MTR (Kg)
73	TS-01-AP-MM-22X3.0	22MM OD x 3.0MM THK x 6 MTR SS316/316L TUBE (ANNEALED & PICKLED)	452	1301	8.52
74	TS-01-AP-MM-25X1.5	25MM OD x 1.5MM THK x 6 MTR SS316/316L TUBE (ANNEALED & PICKLED)	199	572	5.27
75	TS-01-AP-MM-25X2.0	25MM OD x 2.0MM THK x 6 MTR SS316/316L TUBE (ANNEALED & PICKLED)	265	763	6.88
76	TS-01-AP-MM-25X2.5	25MM OD x 2.5MM THK x 6 MTR SS316/316L TUBE (ANNEALED & PICKLED)	331	954	8.41
77	TS-01-AP-MM-25X3.0	25MM OD x 3.0MM THK x 6 MTR SS316/316L TUBE (ANNEALED & PICKLED)	397	1145	9.86
78	TS-01-AP-MM-25X4.0	25MM OD x 4.0MM THK x 6 MTR SS316/316L TUBE (ANNEALED & PICKLED)	530	1526	12.55
79	TS-01-AP-MM-28X2.0	28MM OD x 2.0MM THK x 6 MTR SS316/316L TUBE (ANNEALED & PICKLED)	237	681	7.77
80	TS-01-AP-MM-28X2.5	28MM OD x 2.5MM THK x 6 MTR SS316/316L TUBE (ANNEALED & PICKLED)	296	852	9.53
81	TS-01-AP-MM-28X3.0	28MM OD x 3.0MM THK x 6 MTR SS316/316L TUBE (ANNEALED & PICKLED)	355	1022	11.21
82	TS-01-AP-MM-30X2.0	30MM OD x 2.0MM THK x 6 MTR SS316/316L TUBE (ANNEALED & PICKLED)	221	636	8.37
83	TS-01-AP-MM-30X2.5	30MM OD x 2.5MM THK x 6 MTR SS316/316L TUBE (ANNEALED & PICKLED)	276	795	10.28
84	TS-01-AP-MM-30X3.0	30MM OD x 3.0MM THK x 6 MTR SS316/316L TUBE (ANNEALED & PICKLED)	331	954	12.11
85	TS-01-AP-MM-30X4.0	30MM OD x 4.0MM THK x 6 MTR SS316/316L TUBE (ANNEALED & PICKLED)	442	1272	15.54
86	TS-01-AP-MM-35X2.0	35MM OD x 2.0MM THK x 6 MTR SS316/316L TUBE (ANNEALED & PICKLED)	189	545	9.86
87	TS-01-AP-MM-35X3.0	35MM OD x 3.0MM THK x 6 MTR SS316/316L TUBE (ANNEALED & PICKLED)	284	818	14.35
88	TS-01-AP-MM-38X3.0	38MM OD x 3.0MM THK x 6 MTR SS316/316L TUBE (ANNEALED & PICKLED)	261	753	15.69
89	TS-01-AP-MM-38X4.0	38MM OD x 4.0MM THK x 6 MTR SS316/316L TUBE (ANNEALED & PICKLED)	349	1004	20.33
90	TS-01-AP-MM-38X5.0	38MM OD x 5.0MM THK x 6 MTR SS316/316L TUBE (ANNEALED & PICKLED)	436	1255	24.66
91	TS-01-AP-MM-42X2.0	42MM OD x 2.0MM THK x 6 MTR SS316/316L TUBE (ANNEALED & PICKLED)	158	454	11.96
92	TS-01-AP-MM-42X3.0	42MM OD x 3.0MM THK x 6 MTR SS316/316L TUBE (ANNEALED & PICKLED)	237	681	17.49
93	TS-01-AP-MM-42X4.0	42MM OD x 4.0MM THK x 6 MTR SS316/316L TUBE (ANNEALED & PICKLED)	315	909	22.72
94	TS-01-AP-MM-50X3.0	50MM OD x 3.0MM THK x 6 MTR SS316/316L TUBE (ANNEALED & PICKLED)	199	572	21.07
95	TS-01-AP-MM-50X5.0	50MM OD x 5.0MM THK x 6 MTR SS316/316L TUBE (ANNEALED & PICKLED)	331	954	33.63
96	TS-01-AP-MM-50X6.0	50MM OD x 6.0MM THK x 6 MTR SS316/316L TUBE (ANNEALED & PICKLED)	397	1145	39.46

Note: Working Pressure Calculation: Calculated from ASME B31.1, with values from AMSE B31.3

Seamless Stainless Steel Tube ASTM A269/A213 TP316/316L Working Pressure Table

No.	Part No	Description	Working Pressure (Bar)	Burst Pressure (Bar)	Weight /6 MTR (Kg)
97	TS-01-AP-MM-60X3.0	60MM OD x 3.0MM THK x 6 MTR SS316/316L TUBE (ANNEALED & PICKLED)	166	477	25.56
98	TS-01-AP-MM-60X5.0	60MM OD x 5.0MM THK x 6 MTR SS316/316L TUBE (ANNEALED & PICKLED)	276	795	41.10

Note: Working Pressure Calculation: Calculated from ASME B31.1, with values from AMSE B31.3

Seamless Stainless Steel Tube ASTM A269/A213 TP316/316L MO>2.5% Working Pressure Table

No.	Part No	Description	Working Pressure (Bar)	Burst Pressure (Bar)	Weight /6 MTR (Kg)
99	TS-02-AP-IN-04X035	1/4"OD x 0.035" THK x 6 MTR SS316/316L MO>2.5% TUBE (ANNEALED & PICKLED)	464	1336	0.73
100	TS-02-AP-IN-04X049	1/4"OD x 0.049" THK x 6 MTR SS316/316L MO>2.5% TUBE (ANNEALED & PICKLED)	647	1863	0.95
101	TS-02-AP-IN-04X065	1/4"OD x 0.065" THK x 6 MTR SS316/316L MO>2.5% TUBE (ANNEALED & PICKLED)	861	2480	1.16
102	TS-02-AP-IN-06X035	3/8"OD x 0.035" THK x 6 MTR SS316/316L MO>2.5% TUBE (ANNEALED & PICKLED)	309	890	1.15
103	TS-02-AP-IN-06X049	3/8"OD x 0.049" THK x 6 MTR SS316/316L MO>2.5% TUBE (ANNEALED & PICKLED)	431	1241	1.54
104	TS-02-AP-IN-06X065	3/8"OD x 0.065" THK x 6 MTR SS316/316L MO>2.5% TUBE (ANNEALED & PICKLED)	574	1653	1.94
105	TS-02-AP-IN-06X083	3/8"OD x 0.083" THK x 6 MTR SS316/316L MO>2.5% TUBE (ANNEALED & PICKLED)	733	2112	2.34
106	TS-02-AP-IN-08X035	1/2"OD x 0.035" THK x 6 MTR SS316/316L MO>2.5% TUBE (ANNEALED & PICKLED)	232	668	1.57
107	TS-02-AP-IN-08X049	1/2"OD x 0.049" THK x 6 MTR SS316/316L MO>2.5% TUBE (ANNEALED & PICKLED)	323	931	2.12
108	TS-02-AP-IN-08X065	1/2"OD x 0.065" THK x 6 MTR SS316/316L MO>2.5% TUBE (ANNEALED & PICKLED)	431	1240	2.73
109	TS-02-AP-IN-08X083	1/2"OD x 0.083" THK x 6 MTR SS316/316L MO>2.5% TUBE (ANNEALED & PICKLED)	550	1585	3.34
110	TS-02-AP-IN-12X049	3/4"OD x 0.049" THK x 6 MTR SS316/316L MO>2.5% TUBE (ANNEALED & PICKLED)	216	621	3.30
111	TS-02-AP-IN-12X065	3/4"OD x 0.065" THK x 6 MTR SS316/316L MO>2.5% TUBE (ANNEALED & PICKLED)	287	827	4.29
112	TS-02-AP-IN-12X083	3/4"OD x 0.083" THK x 6 MTR SS316/316L MO>2.5% TUBE (ANNEALED & PICKLED)	367	1057	5.34
113	TS-02-AP-IN-12X109	3/4"OD x 0.109" THK x 6 MTR SS316/316L MO>2.5% TUBE (ANNEALED & PICKLED)	482	1387	6.74
114	TS-02-AP-IN-16X049	1"OD x 0.049" THK x 6 MTR SS316/316L MO>2.5% TUBE (ANNEALED & PICKLED)	162	466	4.48
115	TS-02-AP-IN-16X065	1"OD x 0.065" THK x 6 MTR SS316/316L MO>2.5% TUBE (ANNEALED & PICKLED)	215	620	5.86
116	TS-02-AP-IN-16X083	1"OD x 0.083" THK x 6 MTR SS316/316L MO>2.5% TUBE (ANNEALED & PICKLED)	275	792	7.34
117	TS-02-AP-IN-16X109	1"OD x 0.109" THK x 6 MTR SS316/316L MO>2.5% TUBE (ANNEALED & PICKLED)	361	1040	9.37
118	TS-02-AP-IN-16X120	1"OD x 0.120" THK x 6 MTR SS316/316L MO>2.5% TUBE (ANNEALED & PICKLED)	398	1146	10.19
119	TS-02-AP-IN-20X109	1 1/4"OD x 0.109" THK x 6 MTR SS316/316L MO>2.5% TUBE (ANNEALED & PICKLED)	289	832	12.00
120	TS-02-AP-IN-20X120	1 1/4"OD x 0.120" THK x 6 MTR SS316/316L MO>2.5% TUBE (ANNEALED & PICKLED)	318	916	13.08
121	TS-02-AP-IN-24X120	1 1/2"OD x 0.120" THK x 6 MTR SS316/316L MO>2.5% TUBE (ANNEALED & PICKLED)	265	764	15.98
122	TS-02-AP-IN-24X188	1 1/2"OD x 0.188" THK x 6 MTR SS316/316L MO>2.5% TUBE (ANNEALED & PICKLED)	416	1197	23.80

Note: Working Pressure Calculation: DIN 2413 I Static Straight Pipe including manufacturing tolerance.

Seamless Stainless Steel Tube ASTM A269/A213 TP316/316L MO>2.5% Working Pressure Table

No.	Part No	Description	Working Pressure (Bar)	Burst Pressure (Bar)	Weight /6 MTR (Kg)
123	TS-02-AP-MM-6X1.0	6MM OD x 1.0MM THK x 6 MTR SS316/316L MO>2.5% TUBE (ANNEALED & PICKLED)	552	1590	0.75
124	TS-02-AP-MM-6X1.5	6MM OD x 1.5MM THK x 6 MTR SS316/316L MO>2.5% TUBE (ANNEALED & PICKLED)	828	2385	1.01
125	TS-02-AP-MM-8X1.0	8MM OD x 1.0MM THK x 6 MTR SS316/316L MO>2.5% TUBE (ANNEALED & PICKLED)	414	1193	1.05
126	TS-02-AP-MM-8X1.5	8MM OD x 1.5MM THK x 6 MTR SS316/316L MO>2.5% TUBE (ANNEALED & PICKLED)	621	1789	1.46
127	TS-02-AP-MM-8X2.0	8MM OD x 2.0MM THK x 6 MTR SS316/316L MO>2.5% TUBE (ANNEALED & PICKLED)	828	2385	1.79
128	TS-02-AP-MM-8X2.5	8MM OD x 2.5MM THK x 6 MTR SS316/316L MO>2.5% TUBE (ANNEALED & PICKLED)	1035	2981	2.06
129	TS-02-AP-MM-10X1.0	10MM OD x 1.0MM THK x 6 MTR SS316/316L MO>2.5% TUBE (ANNEALED & PICKLED)	331	954	1.35
130	TS-02-AP-MM-10X1.5	10MM OD x 1.5MM THK x 6 MTR SS316/316L MO>2.5% TUBE (ANNEALED & PICKLED)	497	1431	1.91
131	TS-02-AP-MM-10X2.0	10MM OD x 2.0MM THK x 6 MTR SS316/316L MO>2.5% TUBE (ANNEALED & PICKLED)	662	1908	2.39
132	TS-02-AP-MM-10X2.5	10MM OD x 2.5MM THK x 6 MTR SS316/316L MO>2.5% TUBE (ANNEALED & PICKLED)	828	2385	2.80
133	TS-02-AP-MM-12X1.0	12MM OD x 1.0MM THK x 6 MTR SS316/316L MO>2.5% TUBE (ANNEALED & PICKLED)	276	795	1.64
134	TS-02-AP-MM-12X1.5	12MM OD x 1.5MM THK x 6 MTR SS316/316L MO>2.5% TUBE (ANNEALED & PICKLED)	414	1193	2.35
135	TS-02-AP-MM-12X2.0	12MM OD x 2.0MM THK x 6 MTR SS316/316L MO>2.5% TUBE (ANNEALED & PICKLED)	552	1590	2.99
136	TS-02-AP-MM-12X2.5	12MM OD x 2.5MM THK x 6 MTR SS316/316L MO>2.5% TUBE (ANNEALED & PICKLED)	690	1988	3.55
137	TS-02-AP-MM-12X3.0	12MM OD x 3.0MM THK x 6 MTR SS316/316L MO>2.5% TUBE (ANNEALED & PICKLED)	828	2385	4.04
138	TS-02-AP-MM-14X1.5	14MM OD x 1.5MM THK x 6 MTR SS316/316L MO>2.5% TUBE (ANNEALED & PICKLED)	355	1022	2.80
139	TS-02-AP-MM-14X2.0	14MM OD x 2.0MM THK x 6 MTR SS316/316L MO>2.5% TUBE (ANNEALED & PICKLED)	473	1363	3.59
140	TS-02-AP-MM-14X2.5	14MM OD x 2.5MM THK x 6 MTR SS316/316L MO>2.5% TUBE (ANNEALED & PICKLED)	591	1704	4.30
141	TS-02-AP-MM-14X3.0	14MM OD x 3.0MM THK x 6 MTR SS316/316L MO>2.5% TUBE (ANNEALED & PICKLED)	710	2044	4.93
142	TS-02-AP-MM-15X1.5	15MM OD x 1.5MM THK x 6 MTR SS316/316L MO>2.5% TUBE (ANNEALED & PICKLED)	331	954	3.03
143	TS-02-AP-MM-15X2.0	15MM OD x 2.0MM THK x 6 MTR SS316/316L MO>2.5% TUBE (ANNEALED & PICKLED)	442	1272	3.89
144	TS-02-AP-MM-15X2.5	15MM OD x 2.5MM THK x 6 MTR SS316/316L MO>2.5% TUBE (ANNEALED & PICKLED)	552	1590	4.67
145	TS-02-AP-MM-15X3.0	15MM OD x 3.0MM THK x 6 MTR SS316/316L MO>2.5% TUBE (ANNEALED & PICKLED)	662	1908	5.38
146	TS-02-AP-MM-16X1.5	16MM OD x 1.5MM THK x 6 MTR SS316/316L MO>2.5% TUBE (ANNEALED & PICKLED)	311	894	3.25

Note: Working Pressure Calculation: DIN 2413 I Static Straight Pipe including manufacturing tolerance.

Seamless Stainless Steel Tube ASTM A269/A213 TP316/316L MO>2.5% Working Pressure Table

No.	Part No	Description	Working Pressure (Bar)	Burst Pressure (Bar)	Weight /6 MTR (Kg)
147	TS-02-AP-MM-16X2.0	16MM OD x 2.0MM THK x 6 MTR SS316/316L MO>2.5% TUBE (ANNEALED & PICKLED)	414	1193	4.18
148	TS-02-AP-MM-16X3.0	16MM OD x 3.0MM THK x 6 MTR SS316/316L MO>2.5% TUBE (ANNEALED & PICKLED)	621	1789	5.83
149	TS-02-AP-MM-18X1.5	18MM OD x 1.5MM THK x 6 MTR SS316/316L MO>2.5% TUBE (ANNEALED & PICKLED)	276	795	3.70
150	TS-02-AP-MM-18X2.0	18MM OD x 2.0MM THK x 6 MTR SS316/316L MO>2.5% TUBE (ANNEALED & PICKLED)	368	1060	4.78
151	TS-02-AP-MM-18X2.5	18MM OD x 2.5MM THK x 6 MTR SS316/316L MO>2.5% TUBE (ANNEALED & PICKLED)	460	1325	5.79
152	TS-02-AP-MM-18X3.0	18MM OD x 3.0MM THK x 6 MTR SS316/316L MO>2.5% TUBE (ANNEALED & PICKLED)	552	1590	6.73
153	TS-02-AP-MM-20X1.5	20MM OD x 1.5MM THK x 6 MTR SS316/316L MO>2.5% TUBE (ANNEALED & PICKLED)	248	716	4.15
154	TS-02-AP-MM-20X2.0	20MM OD x 2.0MM THK x 6 MTR SS316/316L MO>2.5% TUBE (ANNEALED & PICKLED)	331	954	5.38
155	TS-02-AP-MM-20X2.5	20MM OD x 2.5MM THK x 6 MTR SS316/316L MO>2.5% TUBE (ANNEALED & PICKLED)	414	1193	6.54
156	TS-02-AP-MM-22X1.5	22MM OD x 1.5MM THK x 6 MTR SS316/316L MO>2.5% TUBE (ANNEALED & PICKLED)	226	650	4.60
157	TS-02-AP-MM-22X2.0	22MM OD x 2.0MM THK x 6 MTR SS316/316L MO>2.5% TUBE (ANNEALED & PICKLED)	301	867	5.98
158	TS-02-AP-MM-25X1.5	25MM OD x 1.5MM THK x 6 MTR SS316/316L MO>2.5% TUBE (ANNEALED & PICKLED)	199	572	5.27
159	TS-02-AP-MM-25X2.0	25MM OD x 2.0MM THK x 6 MTR SS316/316L MO>2.5% TUBE (ANNEALED & PICKLED)	265	763	6.88
160	TS-02-AP-MM-25X2.5	25MM OD x 2.5MM THK x 6 MTR SS316/316L MO>2.5% TUBE (ANNEALED & PICKLED)	331	954	8.41
161	TS-02-AP-MM-25X3.0	25MM OD x 3.0MM THK x 6 MTR SS316/316L MO>2.5% TUBE (ANNEALED & PICKLED)	397	1145	9.86
162	TS-02-AP-MM-25X4.0	25MM OD x 4.0MM THK x 6 MTR SS316/316L MO>2.5% TUBE (ANNEALED & PICKLED)	530	1526	12.55
163	TS-02-AP-MM-28X2.0	28MM OD x 2.0MM THK x 6 MTR SS316/316L MO>2.5% TUBE (ANNEALED & PICKLED)	237	681	7.77
164	TS-02-AP-MM-28X2.5	28MM OD x 2.5MM THK x 6 MTR SS316/316L MO>2.5% TUBE (ANNEALED & PICKLED)	296	852	9.53
165	TS-02-AP-MM-28X3.0	28MM OD x 3.0MM THK x 6 MTR SS316/316L MO>2.5% TUBE (ANNEALED & PICKLED)	355	1022	11.21
166	TS-02-AP-MM-30X2.0	30MM OD x 2.0MM THK x 6 MTR SS316/316L MO>2.5% TUBE (ANNEALED & PICKLED)	221	636	8.37
167	TS-02-AP-MM-30X3.0	30MM OD x 3.0MM THK x 6 MTR SS316/316L MO>2.5% TUBE (ANNEALED & PICKLED)	331	954	12.11
168	TS-02-AP-MM-30X4.0	30MM OD x 4.0MM THK x 6 MTR SS316/316L MO>2.5% TUBE (ANNEALED & PICKLED)	442	1272	15.54
169	TS-02-AP-MM-35X3.0	35MM OD x 3.0MM THK x 6 MTR SS316/316L MO>2.5% TUBE (ANNEALED & PICKLED)	284	818	14.35
170	TS-02-AP-MM-38X3.0	38MM OD x 3.0MM THK x 6 MTR SS316/316L MO>2.5% TUBE (ANNEALED & PICKLED)	261	753	15.69

Note: Working Pressure Calculation: DIN 2413 I Static Straight Pipe including manufacturing tolerance.

Seamless Stainless Steel Tube ASTM A269/A213 TP316/316L MO>2.5% Working Pressure Table

No.	Part No	Description	Working Pressure (Bar)	Burst Pressure (Bar)	Weight /6 MTR (Kg)
171	TS-02-AP-MM-38X4.0	38MM OD x 4.0MM THK x 6 MTR SS316/316L MO>2.5% TUBE (ANNEALED & PICKLED)	349	1004	20.33
172	TS-02-AP-MM-38X5.0	38MM OD x 5.0MM THK x 6 MTR SS316/316L MO>2.5% TUBE (ANNEALED & PICKLED)	436	1255	24.66
173	TS-02-AP-MM-42X2.0	42MM OD x 2.0MM THK x 6 MTR SS316/316L MO>2.5% TUBE (ANNEALED & PICKLED)	158	454	12.03
174	TS-02-AP-MM-42X3.0	42MM OD x 3.0MM THK x 6 MTR SS316/316L MO>2.5% TUBE (ANNEALED & PICKLED)	237	681	17.49

Note: Working Pressure Calculation: DIN 2413 I Static Straight Pipe including manufacturing tolerance.

Seamless Stainless Steel Tube ASTM A269/A213 TP316/316L Polished Grit 320 Working Pressure Table

No.	Part No	Description	Working Pressure (Bar)	Burst Pressure (Bar)	Weight /6 MTR (Kg)
175	TS-01-PO-IN-04X035	1/4"OD x 0.035" THK x 6 MTR SS316/316L TUBE (POLISHED 320 GRIT)	464	1336	0.73
176	TS-01-PO-IN-04X049	1/4"OD x 0.049" THK x 6 MTR SS316/316L TUBE (POLISHED 320 GRIT)	647	1863	0.95
177	TS-01-PO-IN-04X065	1/4"OD x 0.065" THK x 6 MTR SS316/316L TUBE (POLISHED 320 GRIT)	840	2419	1.14
178	TS-01-PO-IN-05X065	5/16"OD x 0.065" THK x 6 MTR SS316/316L TUBE (POLISHED 320 GRIT)	688	1982	1.55
179	TS-01-PO-IN-06X035	3/8"OD x 0.035" THK x 6 MTR SS316/316L TUBE (POLISHED 320 GRIT)	309	890	1.15
180	TS-01-PO-IN-06X049	3/8"OD x 0.049" THK x 6 MTR SS316/316L TUBE (POLISHED 320 GRIT)	431	1241	1.54
181	TS-01-PO-IN-06X065	3/8"OD x 0.065" THK x 6 MTR SS316/316L TUBE (POLISHED 320 GRIT)	560	1612	1.91
182	TS-01-PO-IN-08X035	1/2"OD x 0.035" THK x 6 MTR SS316/316L TUBE (POLISHED 320 GRIT)	232	668	1.57
183	TS-01-PO-IN-08X049	1/2"OD x 0.049" THK x 6 MTR SS316/316L TUBE (POLISHED 320 GRIT)	323	931	2.12
184	TS-01-PO-IN-08X065	1/2"OD x 0.065" THK x 6 MTR SS316/316L TUBE (POLISHED 320 GRIT)	420	1209	2.67
185	TS-01-PO-IN-08X083	1/2"OD x 0.083" THK x 6 MTR SS316/316L TUBE (POLISHED 320 GRIT)	550	1585	3.34
186	TS-01-PO-IN-10X065	5/8"OD x 0.065" THK x 6 MTR SS316/316L TUBE (POLISHED 320 GRIT)	335	966	3.44
187	TS-01-PO-IN-12X065	3/4"OD x 0.065" THK x 6 MTR SS316/316L TUBE (POLISHED 320 GRIT)	280	806	4.20
188	TS-01-PO-IN-12X083	3/4"OD x 0.083" THK x 6 MTR SS316/316L TUBE (POLISHED 320 GRIT)	367	1057	5.34
189	TS-01-PO-IN-12X109	3/4"OD x 0.109" THK x 6 MTR SS316/316L TUBE (POLISHED 320 GRIT)	482	1387	6.74
190	TS-01-PO-IN-16X065	1"OD x 0.065" THK x 6 MTR SS316/316L TUBE (POLISHED 320 GRIT)	210	620	5.72
191	TS-01-PO-IN-16X083	1"OD x 0.083" THK x 6 MTR SS316/316L TUBE (POLISHED 320 GRIT)	275	792	7.34
192	TS-01-PO-IN-20X083	1 1/4"OD x 0.083" THK x 6 MTR SS316/316L TUBE (POLISHED 320 GRIT)	220	634	9.35
193	TS-01-PO-IN-20X109	1 1/4"OD x 0.109" THK x 6 MTR SS316/316L TUBE (POLISHED 320 GRIT)	289	832	12.00
194	TS-01-PO-IN-20X120	1 1/4"OD x 0.120" THK x 6 MTR SS316/316L TUBE (POLISHED 320 GRIT)	318	916	13.08
195	TS-01-PO-IN-24X120	1 1/2"OD x 0.120" THK x 6 MTR SS316/316L TUBE (POLISHED 320 GRIT)	265	763	15.97
196	TS-01-PO-IN-24X184	1 1/2"OD x 0.184" THK x 6 MTR SS316/316L TUBE (POLISHED 320 GRIT)	406	1170	23.35
197	TS-01-PO-IN-24X188	1 1/2"OD x 0.188" THK x 6 MTR SS316/316L TUBE (POLISHED 320 GRIT)	415	1196	23.80
198	TS-01-PO-MM-6X1.0	6MM OD x 1.0MM THK x 6 MTR SS316/316L TUBE (POLISHED 320 GRIT)	552	1590	0.75

Note: Working Pressure Calculation: DIN 2413 I Static Straight Pipe including manufacturing tolerance.

Seamless Stainless Steel Tube ASTM A269/A213 TP316/316L Polished Grit 320 Working Pressure Table

No.	Part No	Description	Working Pressure (Bar)	Burst Pressure (Bar)	Weight /6MTR (Kg)
199	TS-01-PO-MM-8X1.0	8MM OD x 1.0MM THK x 6 MTR SS316/316L TUBE (POLISHED 320 GRIT)	414	1193	1.05
200	TS-01-PO-MM-10X1.0	10MM OD x 1.0MM THK x 6 MTR SS316/316L TUBE (POLISHED 320 GRIT)	331	954	1.35
201	TS-01-PO-MM-10X1.5	10MM OD x 1.5MM THK x 6 MTR SS316/316L TUBE (POLISHED 320 GRIT)	497	1431	1.91
202	TS-01-PO-MM-10X2.0	10MM OD x 2.0MM THK x 6 MTR SS316/316L TUBE (POLISHED 320 GRIT)	662	1908	2.39
203	TS-01-PO-MM-12X1.0	12MM OD x 1.0MM THK x 6 MTR SS316/316L TUBE (POLISHED 320 GRIT)	276	795	1.64
204	TS-01-PO-MM-12X1.5	12MM OD x 1.5MM THK x 6 MTR SS316/316L TUBE (POLISHED 320 GRIT)	414	1193	2.35
205	TS-01-PO-MM-12X2.0	12MM OD x 2.0MM THK x 6 MTR SS316/316L TUBE (POLISHED 320 GRIT)	552	1590	2.99
206	TS-01-PO-MM-14X1.5	14MM OD x 1.5MM THK x 6 MTR SS316/316L TUBE (POLISHED 320 GRIT)	355	1022	2.80
207	TS-01-PO-MM-14X2.0	14MM OD x 2.0MM THK x 6 MTR SS316/316L TUBE (POLISHED 320 GRIT)	473	1363	3.59
208	TS-01-PO-MM-14X2.5	14MM OD x 2.5MM THK x 6 MTR SS316/316L TUBE (POLISHED 320 GRIT)	591	1704	4.30
209	TS-01-PO-MM-15X1.5	15MM OD x 1.5MM THK x 6 MTR SS316/316L TUBE (POLISHED 320 GRIT)	331	954	3.03
210	TS-01-PO-MM-15X2.0	15MM OD x 2.0MM THK x 6 MTR SS316/316L TUBE (POLISHED 320 GRIT)	442	1272	3.89
211	TS-01-PO-MM-15X3.0	15MM OD x 3.0MM THK x 6 MTR SS316/316L TUBE (POLISHED 320 GRIT)	662	1908	5.38
212	TS-01-PO-MM-16X1.5	16MM OD x 1.5MM THK x 6 MTR SS316/316L TUBE (POLISHED 320 GRIT)	311	894	3.25
213	TS-01-PO-MM-16X2.0	16MM OD x 2.0MM THK x 6 MTR SS316/316L TUBE (POLISHED 320 GRIT)	414	1193	4.18
214	TS-01-PO-MM-18X1.5	18MM OD x 1.5MM THK x 6 MTR SS316/316L TUBE (POLISHED 320 GRIT)	276	795	3.70
215	TS-01-PO-MM-18X2.0	18MM OD x 2.0MM THK x 6 MTR SS316/316L TUBE (POLISHED 320 GRIT)	368	1060	4.78
216	TS-01-PO-MM-20X1.5	20MM OD x 1.5MM THK x 6 MTR SS316/316L TUBE (POLISHED 320 GRIT)	248	716	4.15
217	TS-01-PO-MM-20X2.0	20MM OD x 2.0MM THK x 6 MTR SS316/316L TUBE (POLISHED 320 GRIT)	331	954	5.38
218	TS-01-PO-MM-20X2.5	20MM OD x 2.5MM THK x 6 MTR SS316/316L TUBE (POLISHED 320 GRIT)	414	1193	6.54
219	TS-01-PO-MM-20X3.0	20MM OD x 3.0MM THK x 6 MTR SS316/316L TUBE (POLISHED 320 GRIT)	497	1431	7.62
220	TS-01-PO-MM-22X1.5	22MM OD x 1.5MM THK x 6 MTR SS316/316L TUBE (POLISHED 320 GRIT)	226	650	4.60
221	TS-01-PO-MM-22X2.0	22MM OD x 2.0MM THK x 6 MTR SS316/316L TUBE (POLISHED 320 GRIT)	301	867	5.98
222	TS-01-PO-MM-22X2.5	22MM OD x 2.5MM THK x 6 MTR SS316/316L TUBE (POLISHED 320 GRIT)	376	1084	7.29

Note: Working Pressure Calculation: DIN 2413 I Static Straight Pipe including manufacturing tolerance.

Seamless Stainless Steel Tube ASTM A269/A213 TP316/316L Polished Grit 320 Working Pressure Table

No.	Part No	Description	Working Pressure (Bar)	Burst Pressure (Bar)	Weight /6 MTR (Kg)
223	TS-01-PO-MM-25X1.5	25MM OD x 1.5MM THK x 6 MTR SS316/316L TUBE (POLISHED 320 GRIT)	199	572	5.27
224	TS-01-PO-MM-25X2.0	25MM OD x 2.0MM THK x 6 MTR SS316/316L TUBE (POLISHED 320 GRIT)	265	763	6.88
225	TS-01-PO-MM-25X2.5	25MM OD x 2.5MM THK x 6 MTR SS316/316L TUBE (POLISHED 320 GRIT)	331	954	8.41
226	TS-01-PO-MM-25X3.0	25MM OD x 3.0MM THK x 6 MTR SS316/316L TUBE (POLISHED 320 GRIT)	397	1145	9.86
227	TS-01-PO-MM-28X2.0	28MM OD x 2.0MM THK x 6 MTR SS316/316L TUBE (POLISHED 320 GRIT)	237	681	7.77
228	TS-01-PO-MM-28X2.5	28MM OD x 2.5MM THK x 6 MTR SS316/316L TUBE (POLISHED 320 GRIT)	296	852	9.53
229	TS-01-PO-MM-28X3.0	28MM OD x 3.0MM THK x 6 MTR SS316/316L TUBE (POLISHED 320 GRIT)	355	1022	11.21
230	TS-01-PO-MM-30X2.0	30MM OD x 2.0MM THK x 6 MTR SS316/316L TUBE (POLISHED 320 GRIT)	221	636	8.37
231	TS-01-PO-MM-30X3.0	30MM OD x 3.0MM THK x 6 MTR SS316/316L TUBE (POLISHED 320 GRIT)	331	954	12.11
232	TS-01-PO-MM-35X2.0	35MM OD x 2.0MM THK x 6 MTR SS316/316L TUBE (POLISHED 320 GRIT)	189	545	9.86
233	TS-01-PO-MM-35X3.0	35MM OD x 3.0MM THK x 6 MTR SS316/316L TUBE (POLISHED 320 GRIT)	284	818	14.35
234	TS-01-PO-MM-38X3.0	38MM OD x 3.0MM THK x 6 MTR SS316/316L TUBE (POLISHED 320 GRIT)	261	753	15.69
235	TS-01-PO-MM-42X3.0	42MM OD x 3.0MM THK x 6 MTR SS316/316L TUBE (POLISHED 320 GRIT)	237	681	17.49

Note: Working Pressure Calculation: DIN 2413 I Static Straight Pipe including manufacturing tolerance.

Seamless Stainless Steel Tube ASTM A269/A213 TP316/316L MO>2.5% Polished Grit 320 Working Pressure Table

No.	Part No	Description	Working Pressure (Bar)	Burst Pressure (Bar)	Weight /6 MTR (Kg)
236	TS-02-PO-IN-06X035	3/8"OD x 0.035" THK x 6 MTR SS316/316L MO>2.5% TUBE (POLISHED 320 GRIT)	309	890	1.15
237	TS-02-PO-IN-06X049	3/8"OD x 0.049" THK x 6 MTR SS316/316L MO>2.5% TUBE (POLISHED 320 GRIT)	431	1247	1.54
238	TS-02-PO-IN-08X049	1/2"OD x 0.049"THK x 6 MTR SS316/316L MO>2.5% TUBE (POLISHED 320 GRIT)	323	935	2.10
239	TS-02-PO-IN-08X065	1/2"OD x 0.065"THK x 6 MTR SS316/316L MO>2.5% TUBE (POLISHED 320 GRIT)	431	1240	2.70
240	TS-02-PO-IN-08X083	1/2"OD x 0.083" THK x 6 MTR SS316/316L MO>2.5% TUBE (POLISHED 320 GRIT)	550	1585	3.34
241	TS-02-PO-IN-10X065	5/8"OD x 0.065" THK x 6 MTR SS316/316L MO>2.5% TUBE (POLISHED 320 GRIT)	335	992	3.50
242	TS-02-PO-IN-12X065	3/4"OD x 0.065" THK x 6 MTR SS316/316L MO>2.5% TUBE (POLISHED 320 GRIT)	287	827	4.20
243	TS-02-PO-IN-12X109	3/4"OD x 0.109" THK x 6 MTR SS316/316L MO>2.5% TUBE (POLISHED 320 GRIT)	482	1386	6.70

Note: Working Pressure Calculation: DIN 2413 I Static Straight Pipe including manufacturing tolerance.

Chuan Kok Hardware & Machinery Pte Ltd

Address : 1783 Geylang Bahru, #01-02, Singapore 339708
Telephone Number : +65 6294 2566
Email Address : info@chuankok.com
Website : www.chuankok.com
Business Registration Number : 198201577Z
Country of Registration : Singapore

Conditions of Use of Catalogue:

The information in the catalogue are not binding and in order to improve distribution, Chuan Kok Hardware & Machinery Pte Ltd reserves the right to make any change including size and pressure ratings considered necessary at any time and without prior notice.

According to the copyright and the civil law, any reproduction (also partial) of figures and texts of this catalogue by means of electronic, mechanical, photocopies, microfilms, recordings or other is forbidden without Chuan Kok Hardware & Machinery Pte Ltd's authorization.

Catalogue Version: 2021

