

What are Square Flanges:



Square Flange made in accordance to JIS B2291 standard is a connecting piece that links JIS (Japanese Industrial Standards) nominal bore size pipes together and has a working pressure of up to 210kgf/cm². This is equivalent to 210 Bar, or 21MPa. They are usually used in high pressure systems such as hydraulic and steam lines for up to 3,000 PSI working pressure.

Assembly of Square Flanges:

Below are the instruction for assembly of Square Flanges.

STEP 1



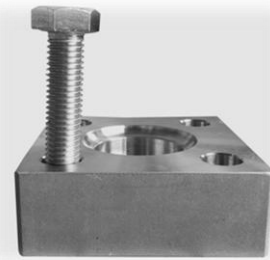
- Ensure the sealed surface are free from scratches and contamination.
- Lubricate with system fluid or any compatible lubricant on the surface of O-ring portion.

STEP 3



- Tighten the bolts with nuts by hand.
- Torque the bolts gradually in diagonal sequence.

STEP 2



- Position the flange.
- Place the bolt on the bolt hole and bolt through it.

STEP 4



- Tighten the bolts.

Chuan Kok Hardware & Machinery Pte Ltd

Address: 1783 Geylang Bahru #01-02, Kallang Distripark Singapore 339708

Telephone Number: +65 6294 2566

Fax Number: +65 6295 7013

Email Address: info@chuankok.com

Website: www.chuankok.com

Business Registration Number: 198201577Z

Country of Registration: Singapore

Conditions of Use of Catalogue

The information in the catalogue are not binding and in order to improve distribution, Chuan Kok Hardware & Machinery Pte Ltd reserves the right to make any change including size and pressure ratings considered necessary at any time and without prior notice.

According to the copyright and the civil law, any reproduction (also partial) of figures and texts of this catalogue by means of electronic, mechanical, photocopies, microfilms, recordings or other is forbidden without Chuan Kok Hardware & Machinery Pte Ltd's authorization.

Catalogue Version: 1215